



2 & 4 Hole Lugs



Standard Cond Size mm ²	Stud Size mm		(8mm Studs)
95	12	2A19 2M12	
120	12	2A24 2M12*	
150	12	2A30 2M12*	
185	12	2A37 2M12*	A37-4ESI
240	12	2A48 2M12*	A48-4ESI
300	12	2A60 2M12	A60-4ESI
400	12	2A80 2M12	A80-4ESI
	16	2A80 2M16	
500	12	2A100 2M12	A100-4ESI
	16	2A100 2M16	
630	12	2A120 2M12	A120-4ESI
	16	2A120 2M16	
800	16	2A160 2M16	A160-4ESI
1000	16	2A200 2M16	

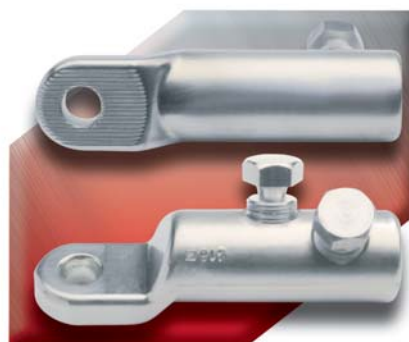
*Lead Times

Medium Voltage Mechanical Lugs

Up to 42kV.

Circular stranded copper or aluminium

Conductor Size *	Ref	Palm Hole Diameter mm
25 - 95	BLMT-25/95-13	13
	BLMT-120/300-17	17
35 - 150	BLMT-35/150-13	13
	BLMT-35/150-17	17
95 - 240	BLMT-95/240-13	13
	BLMT-95/240-17	17
120 - 300	BLMT-120/300-13	13
	BLMT-120/300-17	17
185 - 400	BLMT-185/400-13	13
	BLMT-185/400-17	17
	BLMT-185/400-21	21
500 - 630	BLMT-500/630-13	13
	BLMT-500/630-17	17
	BLMT-500/630-21	21



*For sector shaped stranded conductors or solid conductors, the correct connector size can be confirmed with your usual Sales office.