



Medium Voltage Shear Bolt Connectors

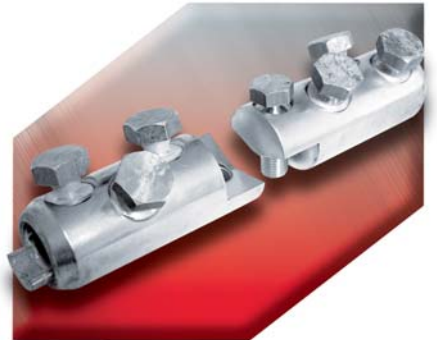
Up to 42kV. Water blocked. Circular stranded copper and aluminium conductors.

Conductor Size* mm ²	Ref
25 - 95	BSM 25/95
35 - 150	BSMB 35/150
95 - 240	BSM 95/240
120 - 300	BSMB 120/300
185 - 400	BSM 185/400
500	BSMB 500
630	BSMB 630



Split Connectors

Conductor Size* mm ²	Ref
120 - 300	BSMV 120/300
185 - 400	BSMV 185/400



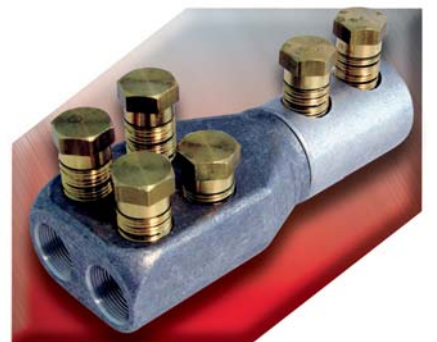
Reduction Connectors

Conductor Size* mm ²	Ref
25/95 - 95/240	BSMB 25/95 - 95/240
95/240 - 185/400	BSMB 95/240 - 185/400
185/400 - 500	BSMB 185/400 - 500
185/400 - 630	BSMB 185/400 - 630
500 - 630	BSMB 500 - 630



B&H Split Branch Connector 11kV

Conductor Size mm ²	Ref
16 - 185	HVBRM 18 SPUTC
185 - 300	HVBRM 22 SPUTC



* For shaped stranded and solid conductors, confirm the correct connector size with your usual Cable Services sales office.