




Polyamide PA66 Glands

Self extinguishing, -20C to +90C temperature range, IP68, available in black / light grey / dark grey.



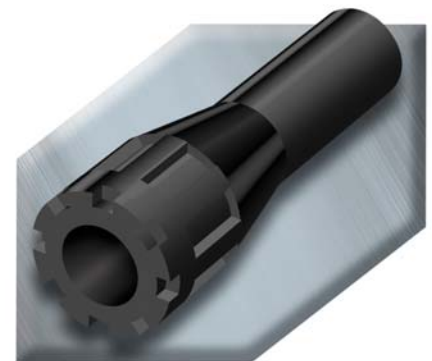
Size	Ref No. (light grey)	Overall Cable Size	
		Min (mm)	Max (mm)
M12	1900.M12	3.5	7
M16	1900.M16	5	10
M20	1900.M20	7	13
M25	1900.M25	10	17
M32	1900.M32	13	21
M40	1900.M40	19	28
M50	1900.M50	27	35
M63	1900.M63	34	45

Cembre plastic glands also available with reduce cable entry. extended threads, factory fitted with lock nuts and collar, PG and BSP threads, and with increased safety. 
Prysmian versions also available.



Heat Shrink Cable Entry Seals

Raychem cable entry seals provide an effective watertight, fume and pressure tight seal between cables and panels, closures and junction boxes. The seals have passed a thermocycling test from -40°C to + 60°C at a pressure of 0.7bar and have a rating to IP67.



Ref No.	Nominal O/D Length (mm)	Internal Dia of Tube (mm)		Internal Dia of Nylon Nut (mm)	Drill Size (mm)
		Max Expanded	Max Recovered		
CES1	70	13	3.0	19	25.5
CES2	70	19	6.3	19	25.5
CES3	95	30	12.7	28	35.5
CES4	114	43	19.0	40	51.0
CES5	175	69	36.0	73	88.0