



Low Voltage Jointing Kits

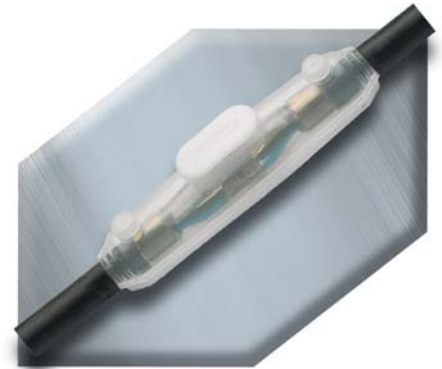
2 part polyurethane resin.

- Connectors supplied separately.

Kit Reference	2 Core mm ²	3 Core mm ²	4 Core mm ²
---------------	------------------------	------------------------	------------------------

Standard Straight Joint

MPJ1	1.5 - 6	1.5 - 6	1.5 - 6
MPJ2	10 - 16	10	10
MPJ3	25 - 35	16 - 25	16 - 25
MPJ4	50 - 95	35 - 70	35 - 70
MPJ5	120 - 185	95	95
MPJ6	240 - 300	120 - 185	120 - 185
MPJ7	-	240 - 300	240 - 300
MPJ8	400*	400*	400*

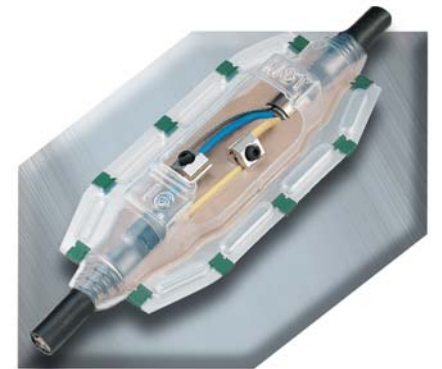


Standard Kit

Universal Straight Joints

(Large volume shell suitable for mechanical connectors)

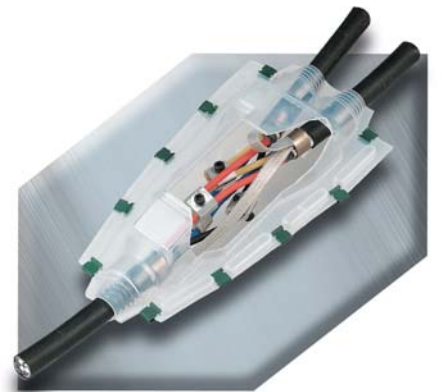
MST6	1.5 - 10	1.5 - 6	1.5 - 6
MST16	16 - 25	10 - 25	10 - 16
MST35	35	35	25 - 35
MST95	50 - 95	50 - 95	50 - 95
MST185	120 - 185	120 - 185	120 - 185
MST300	240 - 300	240 - 300	240 - 300



Universal Kit

Universal Branch Joints

MBR6	1.5 - 10	1.5 - 6	1.5 - 6
MBR16	16 - 25	10 - 25	10 - 16
MBR35	35	35	25 - 35
MBR95	50 - 95	50 - 95	50 - 95
MBR185	120 - 185	120 - 185	120 - 185
MBR300	240 - 300	240 - 300	240 - 300



Universal Branch Kit

* Joint does not accommodate crossed cores.