

Ranger Hook Cleat (High Impact Black Polystyrene) ®

- 13 to 76mm diameter in 6 sizes.
- Overlapping, self adjusting size.
- 'C' section channel location, aids fixing and stacking.
- Double stacking facility.
- Operating temperature -20°C to +90°C.
- Sunlight (UV) and weather resistant.
- Not designed for long vertical runs.
- Unaffected by corrosive environments and many chemicals.
- LSF versions available.



Cable Dia (mm)	Ref No.
13 - 18	382AA01
17 - 22	382AA02
21 - 28	382AA03
27 - 37	382AA04
36 - 51	382AA05
50 - 76	382AA06

Trefoil Single & Two Bolt Cleats (Aluminium) ®

- 24 to 76mm diameter cable in trefoil groups in 33 sizes.
- Can be used for all types of cable routes.
- Supplied complete with top fastening.
- Available as either single or two fixing design.
- Plain finish for indoor dry normal industrial use or outdoor unpolluted areas.
- Epoxy coated for more hostile conditions.
- Operating temperature -60°C to +100°C.



Cable Dia (mm)	Single Bolt Ref No.	Two Bolt Ref No.
36 - 38	376AC09	376AB09
38 - 40	376AC10	376AB10
40 - 41	376AC11	376AB11
41 - 43	376AC12	376AB12
43 - 44	376AC13	376AB13
44 - 46	376AC14	376AB14
46 - 48	376AC15	376AB15
48 - 49	376AC16	376AB16
49 - 51	376AC17	376AB17
51 - 53	376AC18	376AB18
53 - 54	376AC19	376AB19
54 - 55.5	376AC20	376AB20
55.5 - 57	376AC21	376AB21
57 - 59	376AC22	376AB22
59 - 60	376AC23	376AB23
60 - 62	376AC24	376AB24
62 - 63.5	376AC25	376AB25
63.5 - 65	376AC26	376AB26
65 - 66.5	376AC27	376AB27
66.5 - 68	376AC28	376AB28
73 - 74.5	376AC32	376AB32

Single Bolt Fixing

- Plain Finish - 376AC Type
- Epoxy Coated - 376AE Type

Two Bolt Fixing

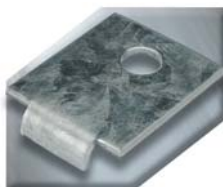
- Plain Finish - 376AB Type
- Epoxy Coated - 376AD Type

Cable Dia (mm)	Single Bolt Ref No.	Two Bolt Ref No.
24 - 25	376AC01	376AB01
25 - 27	376AC02	376AB02
27 - 28	376AC03	376AB03
28 - 30	376AC04	376AB04
30 - 32	376AC05	376AB05
32 - 34	376AC06	376AB06
34 - 35	376AC07	376AB07
35 - 36	376AC08	376AB08

Adaptor Plate (Mild Steel) ®

- To assist fixing cleats to standard 'Unistrut' type channel.

Size	Ref No.
M6 Galvanised	380AG01
M10 Galvanised	380AG02
M12 Galvanised	380AG03
M10 Epoxy Coated	380AG32



Packing Piece (Aluminium / Aluminium Epoxy Coated) ®

- To enable stacking of claw cleats.

Size	Ref No.
Aluminium	389AC03
Aluminium Epoxy Coated	389AC04

