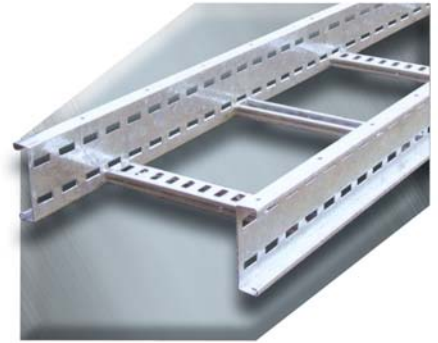




**Tyco Engineered Products**

**Unistrut Cable Ladder**

- Three side rail heights.
- Five standard widths.
- Other widths available on request.
- Seven intermediate sizes.
- Galvanised or stainless steel.
- 3m or 6m lengths.
- Complete range of bends and risers.
- Tees and crosses.



Available Lengths	Standard Rail Heights	Standard Widths	Other Widths (Available on request)	Available Material	Fittings Available
3m	100mm	150mm	100mm	Galvanised	90° Flat Bend
6m	125mm	300mm	200mm	Stainless Steel	45° Flat Bend
	150mm	450mm	400mm		Equal Tee
		600mm	500mm		Un-Equal Tee
		750mm	700mm		Equal Cross
		900mm	800mm		Un-Equal Cross
			1000mm		45° Inside Riser
					45° Outside Riser
				90° Inside Riser	
				90° Outside Riser	

Load data available on request.

**Accessory Fittings**



Equal Tee



90° Flat Bend



90° Outside Riser