



Cable Box Extension Glands

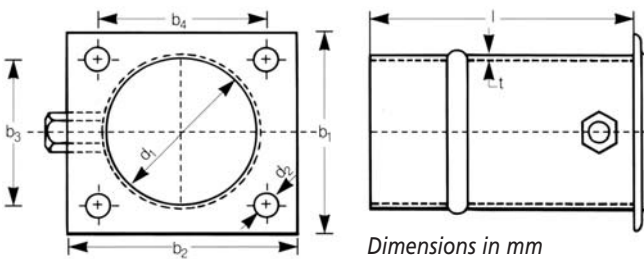
Ref	Application
EAKT 1605	3 core cable to 95mm ²
EAKT 1606	3 core cable to 300mm ²
EAKT 1607	EAKT 1606 plus insulating plate
EAKT 1608	Single core AWA cable to 630mm ²
SFK 445*	Dual fixing X gland
1605 /8INS*	Insulating plate for EAKT1605/8



* Non Raychem items.

NOTE: The use of extension glands can add 150mm to the distance between the bushing stud and the effective bottom plate of the cable box.

The gland is made to match stud spacing to BS 2562. Glands are available with an insulating plate where an earth fault indicator C.T. is required and in aluminium (size X only) for single core applications.



Raychem cable box gland dimensions.

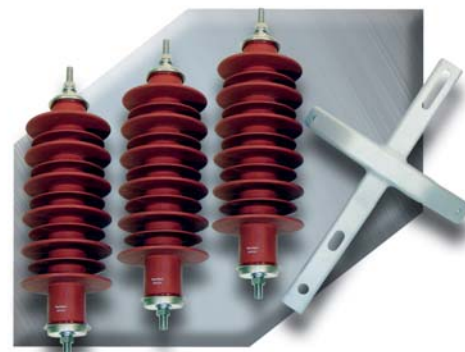
	b ₁	b ₂	b ₃	b ₄	d ₁	d ₂	l	t
Size X	90	90	66	66	68	11	140	1
Size Y	115	125	86	95	97	15	150	1.5

Support Bracket & Insulators

For up to 36kV.

Pole mounted termination.

Set of three, red, non-tracking, flexible polymeric sheds mounted on a porcelain core along with a galvanised steel T-bracket.



Part Number	Description
EAKT 1521	Support bracket and insulators up to 12kV (heavy pollution), 24kV (light pollution)
EAKT 1524	Support bracket and insulators up to 36kV (heavy pollution)