

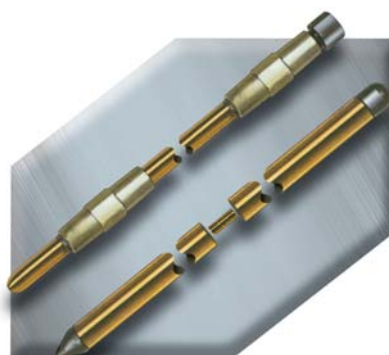


furse Earthing Rods

Copper Bonded Steel Cored Earth Rod

Tested to BS EN 50164-2, BS 7430.

Ref	Nominal Dimensions (mm)
RB205	16 x 1200 (other sizes available)
CG270	Coupling
ST200	Driving Stud



Solid Copper Rod

Tested to BS EN 50164-2, BS 7430.

Ref	Nominal Dimensions (mm)
RC010	15 x 1200 (other sizes and stainless steel available)
CG013	Coupling Dowel
SP010	Spike
ST010	Driving Stud

furse Earth Rods Clamps

- Tested to BS EN 50164-1.
- Corrosion resistant, high strength copper alloy (not commercial brass).

Rod to Tape Clamp (Type A)

Ref	Rod Diameter (mm)	Maximum Tape (mm)
CR105*	16mm	26 x 12

Rod to Cable Clamp (Type G)

Ref	Rod Diameter (mm)	Conductor Range (mm ²)
CR515*	16mm	16 - 70

Rod to Cable Lug Clamp (Type B)

Ref	Rod Diameter (mm)	Lug Hole Size (mm)
CR215*	16mm	10

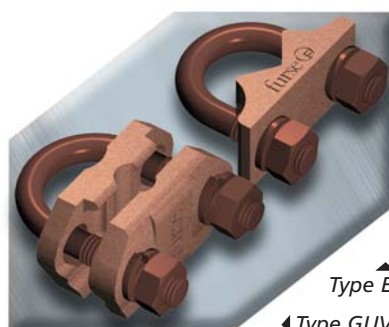
U-Bolt Rod Clamp (Type E)

Ref	Rod Diameter (mm)	Hole Centres (mm)
CR305	16mm	37

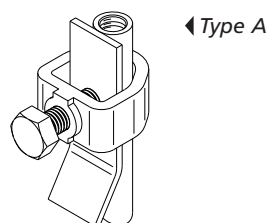
Rod to Cable Clamp (Type GUV)

Ref	Rod Diameter (mm)	Conductor Range (mm ²)
CR700	16mm	16 - 70
CR705	16mm	70 - 185

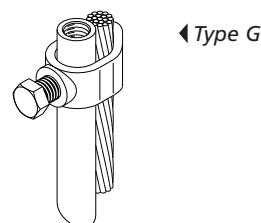
*Other sizes available.



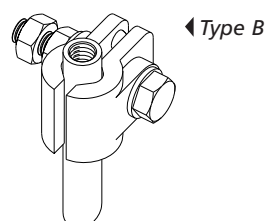
Type E
Type GUV



Type A



Type G



Type B