

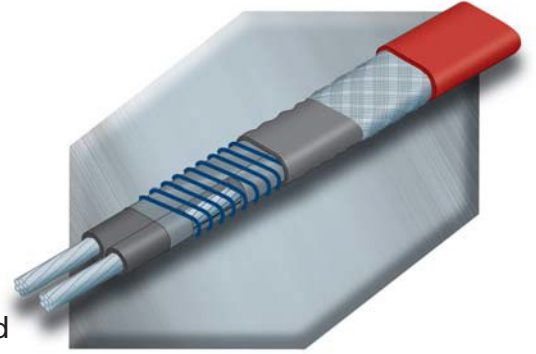


## Industrial Trace Heating Cables

*For Frost Protection Temperature Maintenance.*

### VPL **Raychem** High Temperature Power Limiting

*Electric trace heating cable for frost protection and process temperature maintenance requiring high power output and/or high temperature exposure.*



VPL power limiting cables are parallel heaters formed by a coiled resistor alloy heating element wrapped around two parallel conductors. VPL cables can be overlapped and the parallel circuit means the cable can be cut to length and terminated on site.

Maximum exposure temperature of 250°C (power off).

Outputs at 0°C range from 16w/m to 66w/m and 10w/m to 48w/m at 140°C.

Contact Cable Services with details of your application for a design recommendation and quotation.



*The Thermal Control range of Trace Heating Cables also includes the **ISOPAD** range of parallel circuit constant wattage heaters and **Polymer** insulated series resistance heaters and the **Pyrotenax** range of mineral insulated heating cable.*

*A comprehensive range of accessories are always available ex-stock.*

**The Cable Services Group** are able to offer a full trace heating design service; use the input sheet on the next page or contact your usual sales office with your requirements. Smith Electrical are also able to provide trace heating design and installation packages, contact the Glasgow sales office on 0141 621 2060.