



Industrial Trace Heating Cables

For Frost Protection Temperature Maintenance.

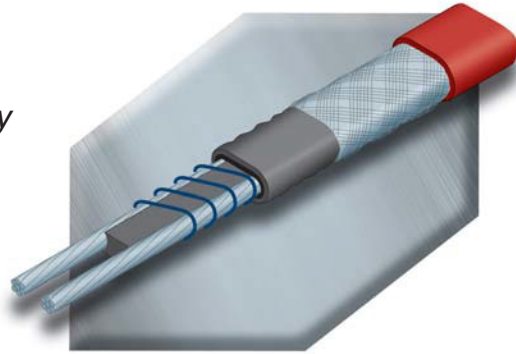
XTV *Raychem* Self Regulating

Electric trace heating for process temperature maintenance applications up to 120°C which may be subject to steam cleaning.

The XTV family of 10 self regulating parallel circuit heating cables for frost protection and process control have T3 classification (except 20X which is T2) and can be used in situations with a continuous exposure temperature of 120°C and an intermittent exposure temperature (with power off) of 215°C (as in steam cleaning).

Outputs range from 12.5w/m to 66w/m at 0°C and 4w/m to 35w/m at 120°C. XTV heaters are available as 110 volt and 230 volt.

Contact Cable Services with details of your application for a design recommendation and quotation.



KTV *Raychem* Self Regulating

Electric trace heating for process control applications up to 150°C which may be subject to steam cleaning.

The KTV family consists of 8 self regulating parallel circuit heating cables for process control applications. The heaters have T2 classification and can be used in applications with a continuous exposure temperature of 150°C and an intermittent exposure temperature (with power off) of 215°C (as in steam cleaning).

Outputs range from 16w/m to 67w/m at 0°C and 6w/m to 30w/m at 150°C. KTV is available as 230 volt and 110 volt.

Contact Cable Services with details of your application for a design recommendation and quotation.

