



HV torque controlled lugs and connectors  
for terminations and joints up to 72 kV

# HV torque controlled lugs and connectors for terminations and joints up to 72 kV

## Features - Benefits



## Torque controlled shear off bolts

- fast and safe installation
- excellent electrical performance
- excellent mechanical performance
- easy installation with socket wrench

## Application range

- pre-engineered design for perfect fit
- Cu and Al conductors
- suitable for up to 1600 mm<sup>2</sup>

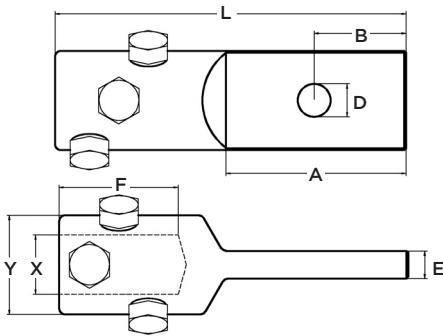
## Connectors

- straight and size transition type
- body made of aluminum alloy

## Lugs

- variety of different palms available
- body made of tinned aluminum alloy

## Cable lug with 1-hole palm (EPPA-052-X/Y)

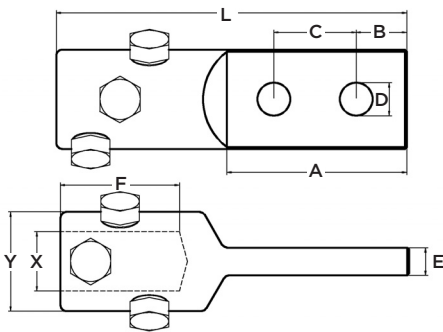


### Dimension:

- |            |           |
|------------|-----------|
| L = 190 mm | D = 18 mm |
| A = 100 mm | E = 25 mm |
| B = 50 mm  | F = 64 mm |

X, Y according to the cable dimensions

## Cable lug with 2-hole palm (EPPA-051-X/Y)

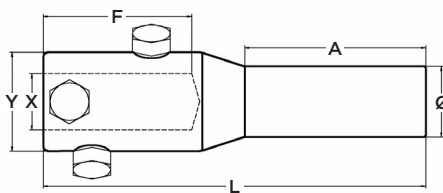


### Dimension:

- |             |           |
|-------------|-----------|
| L = 190 mm  | D = 18 mm |
| A = 100 mm  | E = 25 mm |
| B = 27.5 mm | F = 64 mm |
| C = 45 mm   |           |

X, Y according to the cable dimensions

## Cable lug with rod



### Dimension:

#### ROD Ø 30 mm (EPPA-050-X/Y)

- |            |           |
|------------|-----------|
| L = 190 mm | F = 64 mm |
| A = 100 mm | Ø = 30 mm |

#### ROD Ø 40 mm (EPPA-053-X/Y)

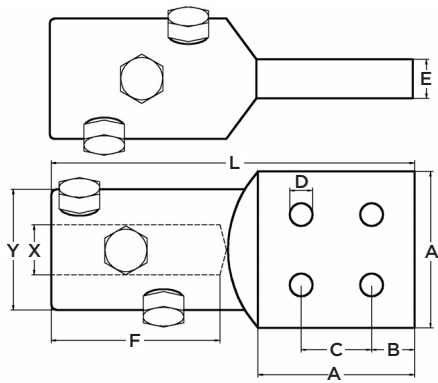
- |            |            |
|------------|------------|
| L = 264 mm | F = 106 mm |
| A = 125 mm | Ø = 40 mm  |

#### ROD Ø 50 mm (EPPA-061-X/Y)

- |            |            |
|------------|------------|
| L = 264 mm | F = 106 mm |
| A = 125 mm | Ø = 50 mm  |

X, Y according to the cable dimensions

**Cable lug with 4-hole palm NEMA pad (EPPA-054-X/Y)**



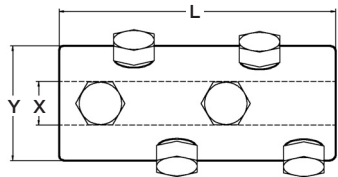
**Dimension:**

Contact plate 100 mm x 100 mm  
 L = 232 mm    C = 45 mm  
 A = 100 mm    D = 14.5 mm  
 B = 27.5 mm    F = 112 mm  
 E = 25 mm

Contact plate 80 mm x 80 mm  
 L = 212 mm    C = 45 mm  
 A = 80 mm    D = 14.5 mm  
 B = 17.5 mm    F = 112 mm  
 E = 25 mm

X, Y according to the cable dimensions

**Mechanical connector for straight connection (EPPA-047-X/Y-L)**

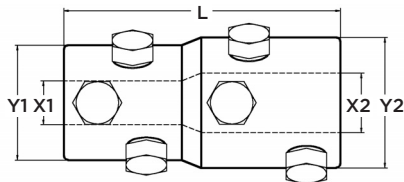


**Dimension:**

L = 130 mm    L = 180 mm

X, Y according to the cable dimensions

**Mechanical connector for size transition (EPPA-047-X1/Y1-X2/Y2-L)**

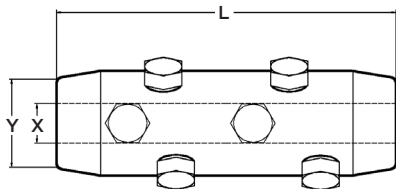


**Dimension:**

L = 130 mm    L = 180 mm

X1/Y1, X2/Y2 according to the cable dimensions

**Mechanical connector for cables with small insulation thickness (EPPA-063-X1/Y1-X2/Y2-L)**

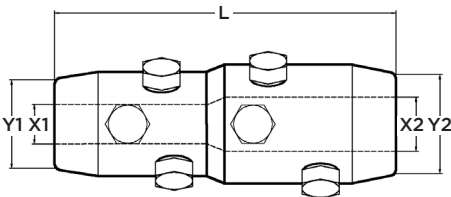


**Dimension:**

L = 180 mm

L = 230 mm

X1/Y1, X2/Y2 according to the cable dimensions



All of the above information, including drawings, illustrations and graphic designs, reflects our present understanding and is to the best of our knowledge and belief correct and reliable. Users, however, should independently evaluate the suitability of each product for the desired application. Under no circumstances does this constitute an assurance of any particular quality or performance. Such an assurance is only provided in the context of our product specifications or explicit contractual arrangements. Our liability for these products is set forth in our standard terms and conditions of sale. Raychem, TE Logo and Tyco Electronics are trademarks.



# Cable Services Limited

*Powering the UK*



To place an order or for more information please contact your Cable Services sales team.

**Cable Services - Wrexham**

Rhosddu Industrial Estate, Rhosrobin,  
Wrexham LL11 4YZ.  
Tel: 01978 340450  
Fax: 01978 311315  
Email: sales@cableservices.co.uk

**Cable Services - Stone**

Unit 2 Douglas Park, Opal Way,  
Stone Business Park, Stone,  
Staffordshire ST15 0YJ  
Tel: 01785 825970  
Fax: 01785 825977  
Email: central@cableservices.co.uk

**Cable Services - Liverpool**

43 St. Johns Road,  
Liverpool L20 8AZ.  
Tel: 0151 9339022  
Fax: 0151 9339765  
Email: lpool@cableservices.co.uk

**Smith Electrical - Glasgow**

Unit 14, Block 8,  
Thornliebank Industrial Estate,  
Glasgow G46 8JH.  
Tel: 0141 621 2060  
Fax: 0141 638 9996  
Email: sales@smithelec.co.uk



[www.cableservices.co.uk](http://www.cableservices.co.uk)

Whilst Cable Services Limited has made every reasonable effort to ensure the accuracy of the information contained in this brochure, Cable Services Limited cannot assure that this information is error free. For this reason, Cable Services Limited does not make any representation or offer any guarantee that such information is accurate, correct, reliable or current. Cable Services Limited reserves the right to make any adjustments to the information at any time. Cable Services Limited expressly disclaims any implied warranty regarding the information contained herein, including, but not limited to, the implied warranties of merchantability or fitness for a particular purpose. Cable Services Limited's only obligations are those stated in Cable Services Limited's Standard Terms and Conditions of Sale. Cable Services Limited will in no case be liable for any incidental, indirect or consequential damages arising from or in connection with, including, but not limited to, the sale, resale, use or misuse of its products. Users should rely on their own judgment to evaluate the suitability of a product for a certain purpose and test each product for its intended application. In case of any potential ambiguities or questions, please don't hesitate to contact us for clarification.