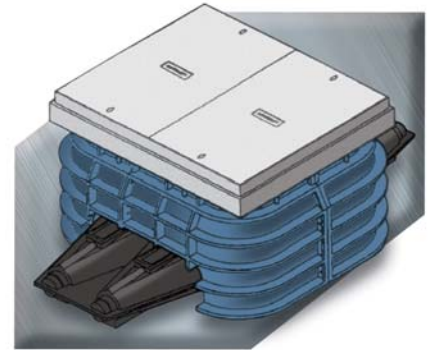




## Sicame Low Voltage Link Boxes

**LVD / FLB / 4 / 3C**

Low voltage 4 way Underground Link Box (Insulated), 800amp rated for 70 - 300mm<sup>2</sup>, 3 core CNE cable.



- All insulated 4 way link box complete with height adjustment Grade B (12½ ton) pavement access assembly.
- High density polythene (HDPE) pavement access chamber supplied as standard eliminating the need for brick built construction.
- Factory assembled and insulated turret will accommodate solid or fused (83mm centres) links to BS88.
- Traditional insulated cast iron bell cover for reliable protection against water ingress (1 metre head).
- Provision of approved neutral test facility and also generation / fault location connection point within the insulated turrets.
- All the required phase and neutral / earth mechanical connectors are factory fitted and utilise shear-head bolt technology to ensure consistent and reliable performance.
- All necessary sealing accessories are provided for the encapsulation of the joint (60 litres required).

### Extras

Reference	Description
LVD / FLB / 4 / CK	4 Core Cable Conversion Kit
LVD / FLB / 4 / EK	External Earth - 70mm <sup>2</sup> Earth Band Assembly
50097	Fuse Carrier
50093	Solid Links

Other specifications of LV Link Boxes available.

