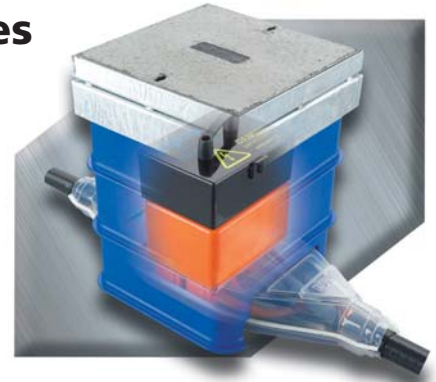


## Low Voltage 2 and 4 Way Link Boxes

Modular link box body kit in 2 and 4 way configurations, accepts most LV cables including CNE (95mm<sup>2</sup> - 300mm<sup>2</sup>) and those with full sized sectoral neutral / earth conductors. Snap fit terminal cover permits on site single resin casting with live connections. Complete kit includes casting shell assembly, cable setting jig, electrical connections, wedge links, diving bell lid, toolbox, pit enclosure, galvanised frame and cover.



Reference	Description	Weight
1700 / UK	Standard 2-way / 3-core UK Link Box	48kg
1701 / UK	Standard 4-way / 3-core UK Link Box	125kg
1702 / UK	Multicable* 2-way / 3-core UK Link Box	49kg
1703 / UK	Multicable* 4-way / 3-core UK Link Box	127kg

\* Multicable means PILC / Polymeric SWA etc

- Modular design reduces weight and space required for link box positioning, making installation simpler in congested areas whilst reducing excavation and reinstatement costs.
- Patented modular assembly integrates single resin casting, snap fit terminal cover, diving bell lid and pit enclosure.
- Supplied with a full set of 82.5mm wedge links (3 links with two way box and 12 links with 4 way box).
- Unique injection moulded tool box combines the function of hiding the diving bell lid and storing out-of-service links with the bright yellow "Danger Live Electrical Apparatus" warning.
- Cast iron diving bell lid with integrated moisture run-off and release system provides link box integrity for up to 2m head of water at 10° installation angle.
- Modular pit enclosure frame comes in 150mm deep sections to eliminate the need for brick construction and to accommodate varying cable depths.
- All internal connections made with standard Tyco tested components (UET and BTCNE connectors) featuring mechanical shear torque controlled technology to ensure accurate assembly and reliable electrical performance.
- Cable core setting jig allows accurate conductor alignment before positioning the link box body, permitting easy access to cables and enabling better electrical connections.
- Clear vacuum-formed body shell allows easy cable installation and inspection prior to resin fill. Shell designed for crossing 300mm<sup>2</sup> cores with sufficient resin coverage.
- Single resin casting eliminates moisture tracking and moisture ingress problems resulting from multiple castings and reduces installation time and volume of resin required.
- Pit cover is housed in a galvanised metal frame and has 100mm of movement to accommodate uneven surfaces. Cover can be supplied with or without concrete fill to allow customising on site to match surface finishes.