



Specialist

Electrical

Tooling

[Version 2]

Visit our web site at: www.cableservices.co.uk

SPECIALIST ELECTRICAL TOOLING

Distributor of 3M, BOWTHORPE, GBZ, CEMBRE, MARTINDALE, PRYSMIAN, ALROC, RAYCHEM, CATU & SHEEN.

**NW / UK / Export
Tel 01978 340450**

**(Central) Ltd
Tel 01785 825970**

**(Liverpool) Ltd
Tel 0151 9339022**

**(Smith Electrical) Ltd
Tel 0141 6212060**



RS 21752
RS 26602



About Cable Services

Founded in the early 1970's, Cable Services has been a specialist distributor of Cable and Cable Accessories since its inception. The involvement with the major manufacturers of jointing materials has meant that Cable Services has always been a recognised supplier of the specialised tooling associated with cable jointing and terminating. With this catalogue we are attempting for the first time to bring together under one cover all the essential tools required by the cable jointing community. All the key items featured in this catalogue will normally be available from stock. Where an item is out of stock, Cable Services would expect to deliver within a few days of receipt of an order.

Contents

4 Low, Medium & High Voltage Cable Preparation Page 4 - 6

ALROC, GBZ, TYCO & Prysmian low, medium and high voltage cable preparation tools

7 Cable Cutting Tools Page 7 - 8

Prysmian, GBZ, CEMBRE & Tyco cable cutting tools

9 Crimping Tools & Die Sets Page 9 - 15

Prysmian, CEMBRE crimping tools and die sets

16 Operating Poles Page 16 - 19

BOWTHORPE overhead line operation poles

20 Gas Torches Page 20 - 22

TYCO gas torches and accessories

23 Miscellaneous Page 23

TYCO cable spiking kit / LUCY cabinet keys / cable drumjacks / cable pulling stockings

24 Test Equipment Page 24 - 28

MARTINDALE test equipment

29 Insulated Tools Page 29 - 34

CATU insulated tools

NOTE: If the item of tooling you are looking for is not included in this catalogue, please tell us - we are always looking for suitable items to add to our range, and can always source tools from alternative suppliers.



One telephone call is all it takes to reserve a crimping tool for collection or despatch to site.

Competitive rates for daily, weekly or extended hire.

Tools Available For Hire

Manual	<i>Prysmian / Cembre BM120 Type Non Ratchet 10 - 120mm².</i>
---------------	---

Small Hydraulic	<i>Prysmian / Cembre G10TS Hand Hydraulic Type and FP10 Foot Operated Type. 10 - 400mm².</i>
------------------------	---

Medium Hydraulic	<i>Cembre ECW-H3D up to 630mm².</i>
-------------------------	--

Large Hydraulic	<i>Prysmian / Cembre E22H Type with Foot Pump. Copper Conductors to 1000mm².</i>
------------------------	---

Hydraulic Cutter	<i>Cembre TC120 Type. Maximum Cutting Diameter 120mm.</i>
-------------------------	---

Also Drum Jacks & Cable Rollers

Extensive Stocks of Prysmian and Cembre Tooling.

Contact one of our sales offices on the numbers below:

 **01978 340450**

 **01785 825970**

 **0151 9339022**

 **0141 6212060**



TOOL HIRE



Screen Scoring Tools

To strip non-bonded semi conductive screen off medium voltage cable.

Part Number - **LHM1R**

for diameters 14mm to 40mm

leaves a semi-conductor strip length of 30 or 40mm

LHML1R spare blade for LHM 1R

Part Number - **LHM2R**

for diameters 38mm to 60mm leaves a semi-

conductor strip length of 30, 40, 45, 55 or 60mm

LHML2R spare blade for LHM 2R



Bonded Screen Removal Tools

To strip bonded semi conductive screen off medium voltage cable.

Part Number - **ASC25-R1** strip length 25mm,

for diameters 14mm to 40mm

leaves a semi-conductor strip length of 25mm

Part Number - **ASC40-R1** strip length 40mm,

for diameters 14mm to 40mm

leaves a semi-conductor strip length of 30 or 40mm

Part Number - **ASC25-R2** strip length 25mm,

for diameters 38mm to 60mm

Part Number - **ASC40-R2** strip length 30mm or 40mm,

for diameters 38mm to 60mm



Outer Sheath Stripping Tools

Part Number - **PG1**

for diameters 8mm to 21mm

Part Number - **PG2**

for diameters 21mm to 35mm

Part Number - **PG3**

for diameters 26mm to 52mm

Part Number - **PG4**

for diameters 47mm to 75mm



Insulating Stripping Tools

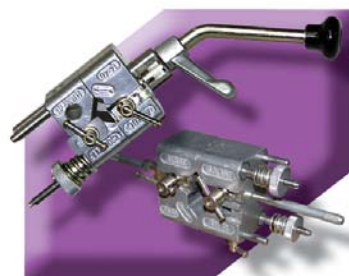
To strip the insulation off medium voltage cable.

Part Number - **BRM-RD1**

for diameters 14mm to 40mm

Part Number - **LH2**

for diameters 38mm to 60mm



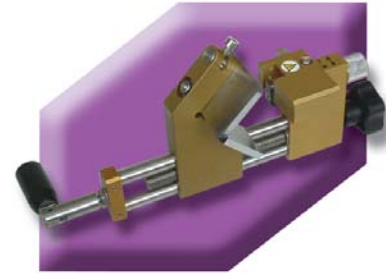
Bonded Screen Removal Tools

Universal tool for shaving the bonded semiconductor layer of medium voltage cables 10-30 kV+. Working range between 10 and 50mm diameter. At the end of the shaving operation the stop can be made manual by switching off the sliding guide part. Adjustable cutting depth of blade - 0 - 1.2mm (steps of 0.1mm).

Part Number - **GB-P20**

Spare Blade *including screws*

Part Number - **GB-P20-S6**



Sheath & Insulation Stripper

Dual function tool. This tool strips outer jackets with diameters between 15 and 50mm, and XLPE insulation up to a thickness of 8mm or 10mm. The automatic feed (2 steps) and the 0 position, for a radial cut, guarantees quick and accurate removal of the cable jacket and insulation.

Part Number - **GB-M20**

Part Number - **GB-M20-S5**

replacement plastic rollers complete

Part Number - **GB-M20-S8** *replacement blades (5pcs)*
(10mm thickness of cut)

Part Number - **GB-M20-S9**

insert to protect the insulation screen



Chamfering Tool

For removing the sharp edge of the insulation after using the insulation stripping tool where the jointing/terminating system requires a tapered finish. Diameters 15mm to 40mm.

Part Number - **GB-KG-05-3**



Tool Set

Complete cable preparation tool kit consisting of GBM20 sheath stripper and plastic insert, GBP20 bonded screen peeling tool, GB-KG-05-3 universal chamfering tool and a transportation box.

Part Number - **GB-PM20**



Extra High Voltage Insulation & Bonded Screen Removal Tool

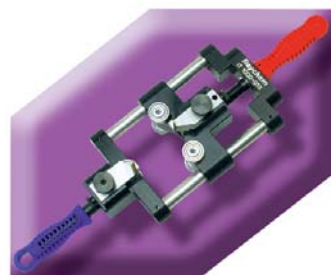
Part Number - **HVIA-STRIPPER-75/150**
cable diameters from 75mm to 150mm

Part Number - **HVIA-STRIPPER-35/90**
cable diameters 35mm to 90mm

Bonded Screen Removal Tool

For bonded screens on sector shaped conductors.

Part Number - **EXRM 0305**



Low Voltage Cable Preparation Tools

Sheath Stripping Tool

Cable cutting and stripping tool for diameters up to 8mm.

Part Number - **UNI8**



Sheath Removal Tool

Part Number - **UNI25+**
cables 25mm and above

Part Number - **UNI29**
cables 4.5mm to 29mm

Part Number - **UNI40**
cables 19mm to 40mm

Part Number - **UNIB1**
spare blade for UNI29 & UNI40

Part Number - **UNIB2**
spare blade for UNI25+



Electricians Scissors

Part Number - **SC1**





Cable Cutting Tools

A range of ratchet operated hand tools for cutting cables up to 75mm diameter.

Part Number - **GB-MKS-300**
cutting diameter up to 35mm

Part Number - **GB-MKS-500**
cutting diameter up to 52mm

Part Number - **GB-MKS-300S**
cutting diameter up to 35mm
with needle roller bearings

Part Number - **GB-MKS-500S**
cutting diameter up to 52mm
with needle roller bearings

Part Number - **GB-MKS-600S**
two handed tool for
cutting diameter up to 62mm

Part Number - **GB-MKS-800S**
two handed tool for
cutting diameter up to 80mm

Cable cutter for multi-wire telephone/data and instrument cables.

Part Number - **GB-MKS-750T**
cutting diameter up to 75mm



Cable Cutting Tools

Hand Operated

Hand operated hydraulic tool specifically designed to cut copper, aluminium-steel cables, steel ropes, copper, aluminium and steel rods. Maximum cutting diameter 24mm.

Part Number - **HT-TC-026**

Also available as a cutting head for use with a separate pump.



Hand Operated

Hand operated hydraulic tool for cutting copper, aluminium-steel cables and steel ropes. It has a two stage hydraulic system to reduce operator time and effort. Maximum cutting diameter 40mm.

Part Number - **HT-TC-041**

Also available as a cutting head for use with a separate pump.





Cable Cutting Tools

Hand Operated

Hand operated hydraulic tool specifically designed to cut copper & aluminium cables and telephone cables. Maximum cutting diameter 50mm.

Part Number - **HT-TC-051**

Also available as a cutting head for use with a separate pump.



Hand Operated

Hand operated hydraulic tool specifically designed to cut copper & aluminium cables and telephone cables. It has a two stage hydraulic system to reduce operator time and effort. Maximum cutting diameter 85mm.

Part Number - **HT-TC-0851**

Also available as a cutting head for use with a separate pump.



Hydraulic Cutting Head

Hydraulic cutting head for use with various pumps (see crimping tool section). Capable of cutting copper, aluminium and telephone cable up to 120mm in diameter.

Part Number - **TC-120**



Miscellaneous Cable Jointing Tools

Wooden Handle Cable Knife

Part Number - **EXRM0607**



Holding Tool

Holding tool for mechanical connectors. Avoids damage to conductors during installation of mechanical shear bolt connectors.

Part Number - **IT-1000-019**



Cordless Impact Wrench

For the installation of Tyco Shear Bolt Mechanical Connectors and Lugs.

Part Number - **IT-1000-023**



Non-Ratchet Handtool

Non-ratchet single stroke tool with a single adjustable indent die. 10 - 120mm².

Part Number - **BM120U**



Hand Hydraulic Crimping Tool

Two stage hydraulic tool delivers 11.5 tonnes with quick ram advance. Pre-set overload ensures crimp reliability. Accepts wide range of interchangeable die sets.

Part Number - **G10TS**



Hydraulic Foot Pump

Two stage foot operated pump with operating pressure of 700 Bar (10,000 psi). An audible overload valve operates at the end of the crimping cycle.

Part Number - **FP10**
 (pump)

Part Number - **FP10-2**
 (pump, hose, case)

Part Number - **FP10-4**
 (pump, hose, case, GT10 head)



Hydraulic Compression Head

The G shaped head enables easy engagement with the cable and connector. 11.5 tonnes compression force. Accepts a wide range of interchangeable die sets with range 10 - 400mm².

Part Number - **G10H**



Large Compression Head

The latch top arrangement allows easy access to connector particularly with cable joints. Compressive force of 22 tonnes enables installation of copper and aluminium up to 1000mm².

Part Number - **E22**





Die Sets

A wide range of hexagon and indent die sets to fit G10 type tools.

Copper Nest Die

Part Number - **UNX**C** (** denotes conductor size)
10 to 300mm²

Copper Indentor Dies

Part Number - **UP10-25C**
10, 16 and 25mm²

Part Number - **UP35-50C**
35 and 50mm²

Part Number - **UP70-300C**
70, 95, 120, 150, 240 and 300mm²

Copper Hexagonal Die Set

Part Number - **U**CHEX** (** denotes conductor size)
10 to 400mm²

Recommendations for aluminium connectors available upon request.



Die Sets

Nest and indent dies for the E22 head.

Copper Nest Dies

Part Number - **EDNX***C** (***) denotes conductor size)
150 to 630mm²

Part Number - **EDN***C** (***) denotes conductor size)
800 and 1000mm²

Copper Indentor Dies (Requires Adaptor)

Part Number - **EDP150-185C**
150 and 185mm²

Part Number - **EDP240-500C**
240, 300, 400 and 500mm²

Part Number - **EDP630C**
630mm²

Part Number - **EDP800-1000C**
800 and 1000mm²

Adaptor To Hold Indentor Inside Head

Part Number - **ED22AD1**
150 to 500mm²

Part Number - **ED22AD2**
630, 800 and 1000mm²





Crimping Tools

Ratchet Handtool

Ratchet handtool for end sleeves 25, 35 and 50mm².

Part Number - **HNKE50**



Ratchet Tool

Ratchet tool for pre-insulated connectors.

Part Number - **HP1**

0.2 to 2.5mm²

Part Number - **HP3**

2.5 to 6mm²



Ratchet Tool

Ratchet tool for end sleeves (boot lace ferrules).

Part Number - **ND4**

0.5 to 4mm²

Part Number - **ND3**

6 to 16mm²

Part Number - **ND2**

1 to 6mm²

Part Number - **ND1**

0.3 to 1.5mm²



Ratchet Tool

Ratchet tool for un-insulated copper tube terminals.

Part Number - **HN1**

0.25 to 10mm²

Part Number - **HN5**

10 to 16mm²



Non-Ratchet Single Stroke Tool

Non-ratchet single stroke tool with adjustable indent die for non-insulated copper tube terminals.

Part Number - **TN70SE**

6 to 70mm²

Part Number - **TN120SE**

10 to 120mm²





Battery Operated Hydraulic Crimping Tools

Battery Hydraulic Crimping Tool

Self contained hand tool. Lightweight and balanced for single handed use, 50KN crimping force. Accepts dies from CEMBRE 50KN die set range. 10 to 240mm².

Part Number - **B51**



Battery Hydraulic Crimping Tool

Self contained hand tool. Lightweight and balanced for single handed use, 130KN crimping force. Accepts all semi-circular slotted dies common to most 130KN tools.

Part Number - **B131-C**



Hand Hydraulic Crimping Tools

Compact Hand Hydraulic

Lightweight, compact hand hydraulic crimper. Pre-set overload when maximum pressure is reached. Accepts CEMBRE 50KN dies. 10 to 240mm².

Part Number - **HT51**



Hand Hydraulic

Hand hydraulic crimping tool. Two stage action consisting of fast advance of ram to engage connector then slower high pressure stage to complete the process. Accepts standard slotted semi circular dies.

Part Number - **HT120**





Crimping Tools

Hydraulic Foot Pump

Two speed foot operated pump developing a maximum pressure of 700 Bar (10,000 psi). Supplied with standard 3m hose complete with female self-lock quick coupler.

Part Number - **PO7000**



Electric Pump

Portable electro-hydraulic pump, operating at 24V dc by battery for independent use, developing 700 Bar pressure. Supplied with 3m flexible hose complete with male + female self-lock quick couplers, remote control, external battery charger, canvas holdall for carrying accessories.

Part Number - **B70M-P24**



Hydraulic Compression Head

Standard G-shaped head complete with quick automatic coupler for connection to hydraulic pump. Accepts standard interchangeable die sets.

Part Number - **RHC131**



Wide Jaw G Tool

Wide jaw G tool, particularly suitable for cable jointing applications on large cables. Complete with quick automatic coupler for connection to hydraulic pump. Accepts standard interchangeable die sets.

Part Number - **RHC131L**





Die Sets

Hexagonal Die Sets

A range of hexagon die sets for use with CEMBRE 5KN tools (HT50 and B50).

Part Number - ME2-50	- 10mm ²
Part Number - ME3-50	- 16mm ²
Part Number - ME5-50	- 25mm ²
Part Number - ME7-50	- 35mm ²
Part Number - ME10-50	- 50mm ²
Part Number - ME14-50	- 70mm ²
Part Number - ME19-50	- 95mm ²
Part Number - ME24-50	- 120mm ²
Part Number - ME30-50	- 150mm ²
Part Number - ME37-50	- 185mm ²

For information on selecting die sets for flexible and aluminium conductors, please contact our sales office.



Hexagonal Die Sets

A range of semi-circular grooved dies to fit HT120 crimping heads.

Part Number - ME2-C	- 10mm ²
Part Number - ME3-C	- 16mm ²
Part Number - ME5-C	- 25mm ²
Part Number - ME7-C	- 35mm ²
Part Number - ME10-C	- 50mm ²
Part Number - ME14-C	- 70mm ²
Part Number - ME19-C	- 95mm ²
Part Number - ME24-C	- 120mm ²
Part Number - ME30-C	- 150mm ²
Part Number - ME37-C	- 185mm ²
Part Number - ME48-C	- 240mm ²
Part Number - ME60-C	- 300mm ²
Part Number - ME80-C	- 400mm ²



Die Sets

Copper Nests & Indentor Die

Part Number - MA2-C	- 10mm ²
Part Number - MA3-C	- 16mm ²
Part Number - MA5-C	- 25mm ²
Part Number - MA7-C	- 35mm ²
Part Number - MA10-C	- 50mm ²
Part Number - MA14-C	- 70mm ²
Part Number - MA19-C	- 95mm ²
Part Number - MA24-C	- 120mm ²
Part Number - MA30-C	- 150mm ²
Part Number - MA37-C	- 185mm ²
Part Number - MA48-C	- 240mm ²
Part Number - MA60-C	- 300mm ²



Copper Indentor Die

Part Number - PA10-C	- 10, 16, 25, 35 and 50mm ²
Part Number - PA24-C	- 70, 95 and 120mm ²
Part Number - PA48-C	- 150, 185 and 240mm ²
Part Number - PA60-C	- 300mm ²

For information on selecting die sets for flexible and aluminium conductors, please contact our sales office.

Crimping Gauges for Hydraulic Tools

MPC 2 device complete with test die set to measure the maximum force developed by Cembre Tools reference: HT131C, HT131L-C, HT120, RHC131, B131-C, B131C-L.

Part Number - **MPC 2**

MPC 3 device complete with test die set to measure the maximum force developed by Cembre Tools reference: HT43, HT51, RH50, RHM50, HT61, RH61, B46, B51, B62.

Part Number - **MPC 3**



Tyco Electronics Bowthorpe EMP

Operating Poles

Bowthorpe operating poles are manufactured from high quality glass reinforced epoxy resin, suitably assembled and finished to comply with relevant design requirements. The present range reflects more than 30 years experience of supplying the World's Power Authorities.

The standard range falls into three groups:

Standard Series

Normally supplied in 1.2m lengths (0.69m lengths available to order). 40mm diameter, fitted with copper alloy interlocking clips where appropriate. Foam filled versions available (suffix FF).

Bottom Section

Bottom section complete with rain shield.

Part Number - **P4B**

Intermediate section.

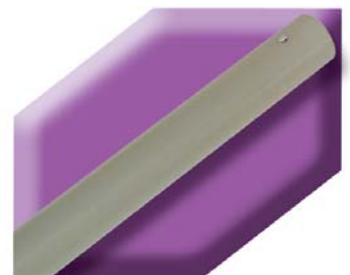
Part Number - **P4I**



Top Section

Top section with rivited termination.

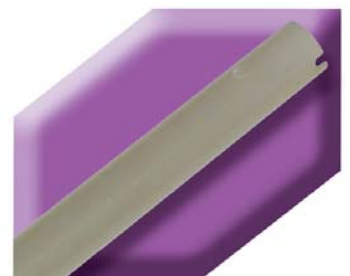
Part Number - **P4TR**



Top Section

Top section with concealed joint termination.

Part Number - **P4TCJ**



Top Section

Top section with spring clip termination.

Part Number - **P4TS**



Top Section Adaptor

Top section adaptor to convert intermediate section to top section spring clip termination specification.

Part Number - **PI/PTS**



Operating Poles

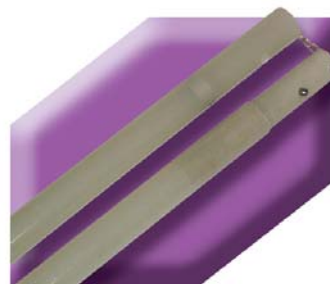
GR Series

Specially developed for tower and sub-station applications. Fully tested and approved to ESI standard 41-21 (draft). Supplied with non-slip hand grip and stainless steel interlocking clips where appropriate. Available with rivited and concealed joint top section terminations.

Type II Rivited Termination

Two sections each 1.2m long x 40mm diameter retained together with chain, with rivited top section termination.

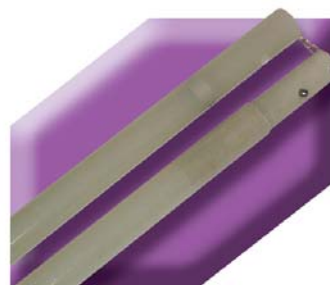
Part Number - **GR2R**



Type II Concealed Joint Termination

Two sections each 1.2m long x 40mm diameter retained together with chain, with concealed joint top section termination.

Part Number - **GR2CJ**



Type III

Sections each 1.2m long x 40mm diameter. Suitable for fitting into bottom of Type I and Type II to extend length.

Part Number - **GR3**



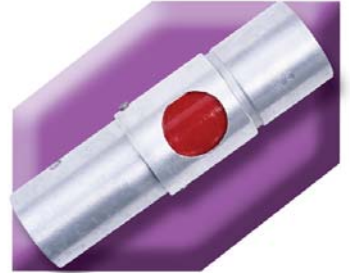
Tyco Electronics Bowthorpe EMP

Operating Sockets

Ring Type

Operating socket for ring type clamps, suitable for rivited top section poles (for use with clamps 420R, 204R, S9BR).

Part Number - **PHS4S** (Window)



Pole Heads

Pole heads for use with spring clip top section poles (P4TS and Adaptor PI/PTS).

For Bowthorpe Earth Clamps

Part Number - **PH031**



Temporary Earthing Hook

Part Number - **PHTEH**

Universal Adaptor

Part Number - **PHUA**

Splash Plate

Part Number - **PHSP**



For Universal Fuse Cut-Outs

Part Number - **PH437**

For J&P Fuse Cut-Outs

Part Number - **PH380**

For LEL Fuse Cut-Outs

Part Number - **PH458**



Tree Pruning Applications

Poles

Heavy duty section where additional rigidity is required. 1.3m long x 49mm diameter fitted with stainless steel interlocking clip.

Part Number - **HP4I**

Pole Adaptor

Adaptor to enable standard series intermediate and top section poles to be connected to the HP4I section.

Part Number - **HP/PI**

NOTE: To fit the tree pruner and pruning saw to the HP4I section, an adaptor HP/PI and a standard range top section (P4TS) or top section adaptor (PI/PTS) are required.



Tree Pruner

Part Number - **PH712C**



Pruning Saw Complete With Sheath

Part Number - **PH440S**





Gas Torches & Accessories

The Tyco FH1630 torch assembly for installation of heat shrink accessories offers maximum burning efficiency and best balance of surface pre-heat.

Torch Handle

Torch handle with shut off valve for use with a FH1630-S nozzles, PIE regulators and hoses.

Nozzle connection thread $R^{3/8}$ " right.

Hose connection thread $R^{3/8}$ " left.

Part Number - **FH-1630-S-HNZ**



Torch Handle

Torch handle with holder and shut off valve and pilot/full flame lever for all FH1630-S nozzles, PIE regulators and hoses.

Nozzle connection thread $R^{3/8}$ " right.

Hose connection thread $R^{3/8}$ " left.

Part Number - **FH-1630-S-HSZ**



Nozzles

Nozzles for FH-1630-S handles.

Part Number - **FH-1630-S-BN28**

28mm diameter

Part Number - **FH-1630-S-BN38**

38mm diameter

Part Number - **FH-1630-S-BN50**

50mm diameter

Part Number - **FH-1630-S-PN17**

17mm diameter



Torch Kit

Red enamel steel box containing BN28, BN38 and PN17 nozzles, torch handle HSZ, constant pressure regulator R1, automatic cut off valve CV and 5m high pressure hose.

Part Number - **FH-1630-S-MC10**



Simple Torch Assembly

Simple torch assembly consisting of nozzle BN38, torch handle HSZ and 5m hose SW5.

Part Number - **FH-1630-S-TS1**



Torch Handle

Torch handle with piezo automatic ignition. Gas flow when trigger pressed only.

Nozzle connection bayonet socket.

Hose connection thread R³/₈" left.

Part Number - **FH-1630-PIE**



Nozzles

Nozzles for Piezo handles.

Part Number - **FH-1630-PIE-BN28**

28mm diameter

Part Number - **FH-1630-PIE-BN38**

38mm diameter

Part Number - **FH-1630-PIE-BN50**

50mm diameter

Part Number - **FH-1630-PIE-PN18**

18mm diameter



Constant Pressure Regulator

Constant pressure regulator for all FH-1630 hoses. Suitable for propane gas bottles from 5kg to 11kg. 2 bar constant gas pressure.

Part Number - **FH-1630-PIE-R1**

Gas bottle connection

W21.8 x 1/4" LH DIN/COMBI

Part Number - **FH-1630-PIE-R2**

Gas bottle connection

W20 x 1/4" LH POL

Part Number - **FH-1630-PIE-R3**

Gas bottle connection

W20 x 1/4" LH SHELL



High Pressure Hoses

High pressure hoses for all FH-1630 handles. Fitted with screw connections for FH1630 constant pressure regulator and handles.

Part Number - **FH-1630-PIE-SW4**

4m long

Part Number - **FH-1630-PIE-SW5**

5m long

Part Number - **FH-1630-PIE-SW10**

10m long





Automatic Cut Off Valve

Automatic cut off valve. Fitted between the hose and the constant pressure regulator - cuts off the gas supply in the event of damage to the hose or handle.

Part Number - **FH-1630-PIE-CV**



Safety Valve

Safety Valve - combining the constant pressure regulator (FH-1630-PIE-R1) and the automatic cut off valve.

Part Number - **FH-1630-PIE-LGS**



Torch Holder

Torch holder - snap fitted on the gas bottle providing a convenient parking place for the gas torch in on site conditions.

Part Number - **FH-1630-TH229**

Nominal bottle diameter - 229mm

Part Number - **FH-1630-TH300**

Nominal bottle diameter - 300mm



Cable Spiking Kit

The Bowthorpe cable spiking kit is designed to prove a selected cable is dead before site work begins. The kit consists of a hand operated hydraulic pump connected to the spiker head by a 6m long fully insulated hose (longer lengths can be supplied). All parts are supplied in a stout wooden case. Cables up to 102mm in diameter can be pierced by the diamond shaped chisel.

Part Number - **BOW-F-CSTE**

WARNING: An independent earth lead **MUST** be fitted to the cable spiker body before the equipment is used. Failure to do so could have serious consequences for the operator in the event of a live cable being pierced.



Lucy Cabinet Keys

Lucy 'T' Key

Lucy 'T' key for pillar shell doors

Part Number - **T-KEY**

Lucy Triangular Key

Lucy triangular headed pillar steel door key

Part Number - **TRI-KEY**



Cable Drum Jacks & Spindles

Screw type fabricated steel.

Part Number - **J3CS** 3 Tonne

Part Number - **J6CS** 6 Tonne

Part Number - **J8CS** 8 Tonne

Various weights of spindles available. Please contact our sales office.
A complete range of cable rollers is also available.
Please contact our sales office with your requirements.



Cable Pulling Stockings

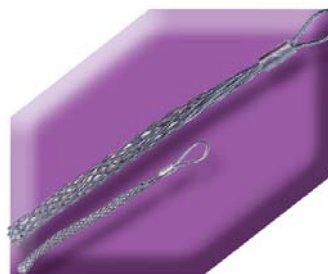
High tensile galvanised steel stockings.

Part Number Overall Length Cable Diameter

CS 11*	305mm	6 - 13mm
CS 12*	430mm	13 - 19mm
CS 13*	510mm	19 - 25mm
CS 14*	610mm	25 - 38mm
CS 15*	735mm	38 - 50mm
CS 16*	865mm	50 - 63mm
CS 17*	990mm	63 - 89mm
CS 18*	990mm	89 - 115mm

Also available in stainless steel or kevlar

*Suffix - S = Single Eye D = Double Eye L = Lace Up



MARTINDALE
ELECTRIC

Martindale Test Equipment

WARNING: Test equipment is designed for use only by competent persons with appropriate qualifications and experience.

110V CT Industrial Plug

Invaluable for checking sockets in factory or on site installations. Design for use on 110V centre tapped circuits.

Part Number - **CP301**

Specification

Operating Voltage: 110V AC
(55-0-55V centre tapped only)

Operating Current: 30mA

Weight: 180g

Overvoltage Category: 2 110V



Professional Check Plug

The professional Buzz It check plug has an IEC socket with an interchangeable 3 pin adaptor and TL 88 3 way fused lead with croc clips allowing testing at light fittings, distribution boards and terminals.

Part Number - **BZ600**

Specification

Main Supply: 200 - 250V (30-70Hz)

Power Consumption: <1.5W

Temperature Range: -10°C to 40°C
at 60%RH (max)

Earth Leakage: <5mA

Dimensions: 65 x 65 x 47mm

Housing: Flame retardant ABS

Supplied with: EX-332 13A mains lead and TL88 3 way fused leads



Classic Check Plug

Classic check plug is a fast and easy way to ensure that 13A sockets are wired correctly.

Part Number - **CP501**

Specification

Main Supply: 200 - 250V (30-70Hz)

Power Consumption: <1.2W

Temperature Range: -10°C to 40°C
at 60%RH (max)

Earth Leakage: <5mA

Dimensions: 65 x 65 x 47mm

Housing: Flame retardant ABS



Thermometer

Dual input digital thermometer with temperature difference capability. It is able to measure input / output temperatures through boilers, radiators etc. Hold and maximum buttons allow the current value to be frozen or the maximum reading to be stored.

Part Number - **DT75**

Specification

Display: 3 1/2 digit LCD

Measurement: -50°C to 1300°C
or -58 to 2000°F

Resolution: 1°C or 1°F
switchable to 0.1°C or 0.1°F

Input connector: Twin standard,
miniature flat thermocouple connector inputs

Dimensions: 147 x 70 x 39mm

Weight: 215g

Includes: 2 K-type bead thermocouples, protective holster, battery and user manual.



Non Trip Earth Loop Impedance Indicator

No trip earth loop impedance indicator gives safe earth loop impedance checking within carefully selected bands without tripping the RCDs.

Part Number - **EZ150**

Like all other indicators this unit cannot detect common earth and neutral or earth neutral reverse.

Specification

Nominal Supply: 230V 50Hz
Earth loop impedance span: 0to1.7 Ω , 1.7to5 Ω , 5-10 Ω , 10to100 Ω , 100to200 Ω , 200to500 Ω
Earth loop threshold accuracy: \pm (10% + 0.3 Ω)
Voltage low indication: <195V
Voltage high indication: <270V
Open earth indication >500 Ω
Dimensions: 65 x 65 x 50mm
Power Consumption: <1.6W
Over voltage: Cat II / 300V
Pollution degree: 2



Professional Version of EZ150

Professional version of EX150 with IEC socket and interchangeable 3 pin adaptor and fused leads allowing for testing at light fittings, distribution boards and terminals.

Part Number - **EZ650**

Specification

As Above
Spec for TL88 leads: 3 wire, two probes with removable croc clips and 1 fixed crocodile clip, supplied with X (IEC) connector - 10A fused.



Non Trip Earth Loop Impedance Tester

Non trip earth loop impedance tester, carries out loop impedance checks from any 13A socket without using probes, operating switches or pressing buttons. Simply plug in.

Part Number - **EZ2100**

Specification

Operation Voltage: 230V 50Hz	Open earth indication: 2k to 70k >2k Ω >70k "open earth" (current less than 3.5mA)
Non trip Earth loop impedance range: 0.1to8.99 Ω (0.01 Ω res.), 9to89.9 Ω (0.1 Ω res.), 90to2k Ω (1 Ω res.)	Power Consumption: Typical 4.5mA, max 7mA, <2VA
Earth loop accuracy: \pm (3% + 0.1 Ω +2 digits)	Over voltage: Cat II / 300V
Voltage indication: low <195V, high >270V	Pollution degree: 2
EN threshold: 30W	Dimensions: 140 x 80 x 55mm
Weight: 230g	Supplied with: 13A plug top test lead and carry case. No batteries required.



Insulation Tester

Economy 16th edition tester.
With automatic zero adjust feature to
remove the resistance of the leads, fast
accurate continuity testing at 200mA.

Part Number - **IN2001**

Specification

Insulation: 10k Ω to 100M Ω at 500V
Continuity: 0to200 Ω , 0.01 Ω resolution (audible tone <1 Ω)
Voltage range: 500V AC
Complies with: BS EN 61557 and 16th edition
Dimensions: 190 x 90 x 54mm
Includes: quality soft protective carry case, test lead, battery & user manual.



MARTINDALE ELECTRIC

Insulation Tester

Insulation and continuity tester gives 250, 500 and 1000V tests. Automatic zero adjust feature to remove the resistance of the leads, the three test voltages enables the widest range of testing.

Part Number - **IN2003**

Specification

Insulation: 10k Ω to 50M Ω at 250V, 10k Ω to 100M Ω at 500V, 10k Ω to 200M Ω at 1000V

Continuity: 0 to 200 Ω , 0.01 Ω resolution (audible tone <1 Ω)

Voltage range: 500V AC

Complies with: BS EN 61557 and 16th edition

Dimensions: 190 x 90 x 54mm

Includes: quality soft protective carry case, test lead, battery & user manual.



Insulation Tester

With clear 4000 count, backlit digital display with analogue bargraph. Comes complete with test leads, auto zero, auto hold and battery condition indicator. Output test voltage automatically displayed during testing. 250, 500 and 1000V test, user settable limits with pass/fail indication.

Part Number - **IN2103**

Specification

Insulation: 200k Ω to 2,000M Ω at 250, 500 or 1000V in 4 ranges, with automatic discharge

Continuity: 0.01 to 40 Ω , 0.01 Ω resolution at 200mA DC (buzz <1 Ω)

Resistance: 0.1 Ω to 2,000 M Ω (buzz <1 Ω)

Voltage range: 600V AC/DC, warning for voltage presence.

Complies with: BS EN 61557 and BS 7671:2001 (16th edition)

Over voltage: 300V Category III

Dimensions: 190 x 190 x 54mm

Includes: batteries, test leads, instructions and carry case.



RCD Tester

For fast and easy to use testing of all common RCDs rated up to 500mA.

Part Number - **RC2000**

Specification

RCD rating (I Δ N): 6mA, 10mA, 30mA, 100mA, 300mA and 500mA

Half trip setting (1/2 x I Δ N): 3mA, 5mA, 15mA, 50mA, 150mA and 250mA

Fast trip setting: 150mA (for I Δ N=6, 10 and 30mA only)

Test polarity: 0° and 180°

Timing range: 0 - 1999mSec (resolution of 1mSec)

Timing accuracy: $\pm 2\%$ of reading ± 1 digit

Dimensions: 190 x 90 x 54mm

Includes: quality soft protective carry case, mains test lead & user manual.



Loop Tester

A fast accurate auto ranging 16th Edition earth loop impedance tester. It can carry out phase earth and phase neutral testing and it automatically displays prospective short circuit current readings.

Part Number - **LP2000**

Specification

Phase earth loop: (auto ranging)
0 to 15Ω, resolution 0.01Ω,
15 to 199.9Ω, resolution 0.1Ω

Prospective short circuit current:
9A to 19.99kA, resolution 10A

Dimensions: 190 x 90 x 59mm

Includes: quality soft protective carry case, mains test lead, green wander lead & user manual.



General Purpose Multimeter

11 functions including 10amp range, basic accuracy of 0.8% suitable for most applications. The meter has ceramic fuse protection and a wrong connection bleep to prevent misuse. It has audible continuity check and also measures capacitance and frequency

Part Number - **MM44**

Specification

AC V: 100mV to 600V (5 ranges)
(50Hz to 500Hz)

AC A: 10μA to 10A (3 ranges)
(50Hz to 500Hz)

DC V: 100μV to 600V (5 ranges)

DC A: 10μA to 10A (3 ranges)

Ohms: 100mΩ to 2000MΩ (7 ranges)

Continuity: Buzz at <100Ω

Frequency: 1Hz to 15MHz
(5 ranges, auto ranging)

Capacitance: 1pF to 20μF (5 ranges)

Logic test: Hi 2.8V ± 0.8V
Lo 0.8V ± 0.5V

Diode and transistor test

Battery test: 1.5V, 9V

Overvoltage: 600V, Cat 3

Dimensions: 147 x 70 x 39mm

Supplied with: protective holster,
test leads, installed battery, spare fuse
and user manual.



Electricians Multimeter

Electrician multimeter with phase rotation and temperature measurement. Designed to meet the needs of the professional electrician by including audible continuity, phase rotation, frequency and temperature as well as the basic electrical functions.

Part Number - **MM47**

Specification

3½ digit LCD display with
automatic polarity and zero.

AC V: 10μV to 600V (3 ranges) (1mV)

Capacitance: 0.01μF to 2mF
(4 ranges)

DC V: 100μV to 600V (4 ranges)

Temperature: -20 to 750°C
-4 to 1400°F (K-type probes)

Ohms: 100mΩ to 2000MΩ (7 ranges)

Phase rotation indicator:
80 to 480V, 45 to 450Hz

Diode test

Frequency: 10Hz to 40kHz
autoranging 1Hz resolution

Overvoltage: 600V, Cat 3

Dimensions: 147 x 70 x 39mm

Supplied with: test leads, battery,
K-type probe, user manual and
rubberised protective holster.



MARTINDALE ELECTRIC

Fuse Finder

The Elite professional fuse finder brings microprocessor controlled multi level sensitivity to fuse and breaker identification. Capable of operating from either 13A plug top lead for sockets or TL83 lead for light fittings or other points in a circuit.

Part Number - **FD650**

Specification Transmitter

Voltage range: 230V
Frequency range: 50 - 60Hz
Switching frequency: Approx. 5Hz
Transmission pulse width: Approx. 1.7µs
Transmission pulse amplitude: 20A max
Dimensions: Approx 65 x 65 x 46mm
Weight: 65g
Earth leakage: Nil
Power supply: From mains
Overvoltage: Cat III / 300V
Pollution degree: 2
Protection class: IP20

Receiver

Trace depth for fuse assignment: Approx. 0 - 10cm, depending on local conditions
Dimensions: 202 x 32 x 22mm
Weight: 150g (excl. battery)
Protection class: IP20
Power supply: 9V battery, MN1604/PP3, IEC 6LA61 (alkaline only) - not included.

Units are EMC compliant



1000A AC Clamp Meter

For general purpose use with large jaw size, voltage and resistance ranges. The ideal basic clamp for AC current use with the functions of a standard multimeter.

Part Number - **CM54**

Specification

3 1/2 digit LCD display with large 21mm digits
AC V: 1V to 750V (50Hz to 500Hz)
AC A: 100mA to 1000A (2 ranges) (50 / 60Hz)
DC V: 1V to 1000V
Ohms: 100mΩ to 2000MΩ (4 ranges)
Continuity: Buzz at <75Ω
Max conductor: 57mmØ or 70 x 18mm bar
Dimensions: 277 x 102 x 49mm
Weight: 540g
Includes: test leads, soft carry case and user manual.





Catu Isomil Insulated Tools

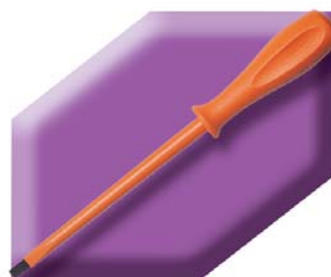
A complete range of insulated tools for live working up to 1000V according to IEC 60900 standard. Individually tested to 10,000 volts.

Imperial sizes of sockets and spanners also available.

Flat Bladed Screwdrivers

Chrome-molybdenum vanadium steel blade.

- Part Number - **MO-65203** - Blade 3x100mm
- Part Number - **MO-65204** - Blade 3.5x100mm
- Part Number - **MO-65205** - Blade 4x100mm
- Part Number - **MO-65206** - Blade 5.5x125mm
- Part Number - **MO-65207** - Blade 6.5x150mm
- Part Number - **MO-65209** - Blade 8x175mm
- Part Number - **MO-65211** - Blade 10x200mm



PoziDriv Screwdrivers

Chrome-molybdenum vanadium steel blade.

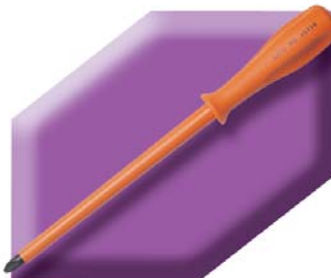
- Part Number - **MO-65240** - No.0 Head 3x60mm
- Part Number - **MO-65242** - No.1 Head 4.5x80mm
- Part Number - **MO-65244** - No.2 Head 6x100mm
- Part Number - **MO-65246** - No.3 Head 8x150mm
- Part Number - **MO-65248** - No.4 Head 10x200mm



Phillips Screwdrivers

Chrome-molybdenum vanadium steel blade.

- Part Number - **MO-65230** - No.0 Head 3x60mm
- Part Number - **MO-65232** - No.1 Head 4.5x80mm
- Part Number - **MO-65234** - No.2 Head 6x100mm
- Part Number - **MO-65266** - No.3 Head 8x150mm



The full range of CATU Electrical Safety Equipment is also available. Contact our sales office for information.



Universal Pliers

Special tool steel, oil hardened, burnished head.

Part Number - **MO-66001** - Overall Length 160mm

Part Number - **MO-66002** - Overall Length 180mm

Part Number - **MO-66003** - Overall Length 200mm

Part Number - **MO-66005** - Overall Length 250mm



Flat Nosed Pliers

Special tool steel, oil hardened, burnished head.

Part Number - **MO-66300** - Overall Length 145mm

Part Number - **MO-66302** - Overall Length 160mm



Round Nosed Pliers

Special tool steel, oil hardened, burnished head.

Part Number - **MO-66202** - Overall Length 160mm



Bent Snipe Nosed Pliers

Chrome-vanadium steel, burnished head.

Part Number - **MO-66402** - Overall Length 160mm

Part Number - **MO-66404** - Overall Length 200mm



Long Nosed Pliers with Side Cutter

Special tool steel, oil hardened, burnished head.

Part Number - **MO-66102** - Overall Length 160mm



Water Pump Pliers

Chrome-vanadium steel, burnished head.

Standard

Part Number - **MO-66502** - Overall Length 250mm

Box Joint

Part Number - **MO-66505** - Overall Length 250mm



Side Cutters

Special carbon steel, oil hardened, burnished head.

Part Number	Overall Length	Cutting Capacity (mm)	
		(soft 80kg/mm ²)	(hard 140kg/mm ²)
MO-67101	140mm	Diam 2	Diam 1
MO-67102	160mm	Diam 2.5	Diam 1.5
MO-67103	180mm	Diam 3	Diam 2.5



End Cutters

Special carbon steel, oil hardened, burnished head.

Part Number	Overall Length	Cutting Capacity (mm)	
		(soft 80kg/mm ²)	(hard 140kg/mm ²)
MO-67401	140mm	Diam 2	Diam 1
MO-67402	160mm	Diam 3	Diam 2
MO-67404	180mm	Diam 4	Diam 3



Cable Cutters

Chrome-vanadium forged steel, oil hardened.

Part Number	Overall Length	Cutting Capacity
MO-67500	170mm	4mm Diam
MO-67501	170mm	15mm Diam
MO-67502	230mm	20mm Diam



Ratchet Cable Cutters

Copper and aluminium cable only. Treated forge steel blade.

Part Number	Cutting Capacity
MO-67599	32mm ² / 180mm ² CU / 250mm ² Alum
MO-67600	38mm ² / 240mm ² CU / 300mm ² Alum
MO-67601	55mm ² / 300mm ² CU / 450mm ² Alum
MO-67611	24mm ² / 150mm ² CU / 180mm ² Alum



Hacksaw

Protected hard forge steel. two blade positions, flush and 90° cutting options. Supplied with 2 blades.

Part Number - **MO-64502** - Overall Length 450mm





Adjustable Spanner

Special tooled steel, oil hardened.

Part Number	Overall Length	Maximum Capacity
MO-69002	210mm	24mm
MO-69003	250mm	28mm
MO-69004	310mm	34mm
MO-69005	385mm	43mm



Reversible Hexagonal Ratchet Spanner

Special tool steel, oil hardened.

Part Number - **MO-69210** - Size 10mm

Part Number - **MO-69213** - Size 13mm

Part Number - **MO-69216** - Size 16mm

Part Number - **MO-69217** - Size 17mm

Part Number - **MO-69218** - Size 18mm

Part Number - **MO-69219** - Size 19mm



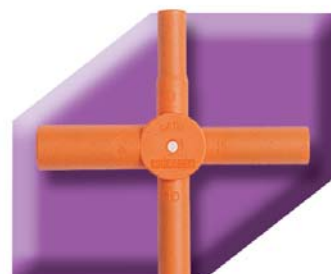
Combination Wrench

Special steel sockets.

Part Number - **MO-68702**
4 Hexagonal Sockets 8 / 10 / 12 / 14mm

Part Number - **MO-68703**
4 Hexagonal Sockets 7 / 9 / 11 / 13mm

Part Number - **MO-68704**
4 Hexagonal Sockets 8 / 10 / 13 / 17mm



Right Angle Hexagonal Key Wrench

Chrome vanadium steel.

Part Number - **MO-69903**
Hexagonal Head - 3mm / 83x123mm

Part Number - **MO-69904**
Hexagonal Head - 4mm / 84x124mm

Part Number - **MO-69905**
Hexagonal Head - 5mm / 84x126mm

Part Number - **MO-69906**
Hexagonal Head - 6mm / 85x126mm

Part Number - **MO-69908**
Hexagonal Head - 8mm / 87x128mm

Part Number - **MO-69910**
Hexagonal Head - 10mm / 87x130mm

Part Number - **MO-69912**
Hexagonal Head - 12mm / 90x132mm



Open Ended Spanners

Chrome vanadium steel.

Part Number	Size	Part Number	Size
MO-68008	8mm	MO-68020	20mm
MO-68009	9mm	MO-68021	21mm
MO-68010	10mm	MO-68022	22mm
MO-68011	11mm	MO-68023	23mm
MO-68012	12mm	MO-68024	24mm
MO-68013	13mm	MO-68025	25mm
MO-68014	14mm	MO-68026	26mm
MO-68015	15mm	MO-68027	27mm
MO-68016	16mm	MO-68028	28mm
MO-68017	17mm	MO-68029	29mm
MO-68018	18mm	MO-68030	30mm
MO-68019	19mm	MO-68032	32mm



Cranked Ring Spanners

Chrome vanadium steel.

Part Number	Size	Part Number	Size
MO-68107	7mm	MO-68120	20mm
MO-68108	8mm	MO-68121	21mm
MO-68109	9mm	MO-68122	22mm
MO-68110	10mm	MO-68123	23mm
MO-68111	11mm	MO-68124	24mm
MO-68112	12mm	MO-68125	25mm
MO-68113	13mm	MO-68126	26mm
MO-68114	14mm	MO-68127	27mm
MO-68115	15mm	MO-68128	28mm
MO-68116	16mm	MO-68129	29mm
MO-68117	17mm	MO-68130	30mm
MO-68118	18mm	MO-68132	32mm
MO-68119	19mm		



Hexagonal Spanners with T Handle

Chrome steel. Length 139mm.

Part Number - **MO-68610** - Size 10mm

Part Number - **MO-68613** - Size 13mm

Part Number - **MO-68614** - Size 14mm

Imperial sizes available. Contact our sales office for information.





Socket Wrenches

Chrome steel.

$\frac{3}{8}$ " Drive

Part Number	Size
MO-69306	6mm
MO-69307	7mm
MO-69308*	8mm
MO-69309	9mm
MO-69310*	10mm
MO-69311	11mm
MO-69312*	12mm
MO-69313*	13mm
MO-69314*	14mm
MO-69315	15mm
MO-69316	16mm
MO-69317*	17mm
MO-69318	18mm
MO-69319*	19mm
MO-69321*	21mm
MO-69322*	22mm
MO-69323*	23mm

$\frac{1}{2}$ " Drive

Part Number	Size
MO-69408*	8mm
MO-69410*	10mm
MO-69411	11mm
MO-69412*	12mm
MO-69413*	13mm
MO-69414*	14mm
MO-69415	15mm
MO-69416	16mm
MO-69417	17mm
MO-69418	18mm
MO-69419*	19mm
MO-69420	20mm
MO-69421*	21mm
MO-69422*	22mm
MO-69423*	23mm
MO-69424	24mm
MO-69430	30mm



Socket Tools

$\frac{3}{8}$ " Drive

- Part Number - **MO-69513*** - Reversible Ratchet
- Part Number - **MO-69523*** - Extension Bar 130mm
- Part Number - **MO-69533** - Extension Bar 250mm
- Part Number - **MO-69542** - T-Wrench 130mm
- Part Number - **MO-69543** - T-Wrench 200mm

$\frac{1}{2}$ " Drive

- Part Number - **MO-69514*** - Reversible Ratchet
- Part Number - **MO-69524*** - Extension Bar 125mm
- Part Number - **MO-69534** - Extension Bar 250mm
- Part Number - **MO-69544** - T-Wrench 300mm



Socket Sets

Part Number - **MO-69308/23** - $\frac{3}{8}$ " Socket Set

Part Number - **MO-69408/23** - $\frac{1}{2}$ " Socket Set

Socket sets comprise items marked *.
Supplied in plastic box 410 x 120 x 75mm.



CABLE SERVICES




RS 21752
Cable Services
RS 26602
Smith Electrical



Cable Services Ltd
(NW / UK / Export)
Rhosddu Industrial Estate,
Rhosrobin, Wrexham LL11 4YZ.


Tel: 01978 340450
Fax: 01978 311315
Email: uk@cableservices.co.uk



(Central) Ltd
Unit 7-11 Douglas Park, Opal Way,
Stone Business Park, Stone, Staffs ST15 0YJ
Tel: 01785 825970 • Fax: 01785 825977
Email: central@cableservices.co.uk



(Liverpool) Ltd
43 St. Johns Road, Liverpool L20 8AZ.
Tel: 0151 9339022 • Fax: 0151 9339765
Email: lpool@cableservices.co.uk



(Smith Electrical) Ltd
Hawbank House, 21/23 Hawbank Road,
College Milton, East Kilbride G74 5EG
Tel: 0141 621 2060 • Fax: 01355 238502
Email: scotland@cableservices.co.uk

Since the Cable Services Group do not control the manufacture of the products in this catalogue, we reserve the right to alter the equipment specification, description, availability and prices without prior notice and no part of this publication shall be deemed to be part of a contract to supply the equipment unless specifically agreed between the parties concerned.