



MECHANICAL SHEAR BOLT TERMINAL LUGS BLMT FOR LOW, MEDIUM AND HIGH VOLTAGE CABLE ACCESSORIES UP TO 84 kV

KEY FEATURES

- Wide application range, indoor or outdoor
- Can be used with almost every type of conductor and material
- Torque-controlled shear-head bolts guarantee a good electrical contact
- Easy installation with standard socket spanner
- Pre-engineered design for a good fit in high and medium voltage cable accessories up to 84 kV
- Connection to aluminium or copper busbar
- Tested according to IEC 61238-1 class A

Mechanical shear bolt terminal lugs BLMT are designed for use in low, medium and high voltage applications. This range of products has lugs covering conductor sizes from 10 to 1000 mm², including three lug sizes that cover conductor sizes 25 mm² to 400 mm². All products consist of a tin-plated body, shear head bolts and inserts for small conductor sizes.

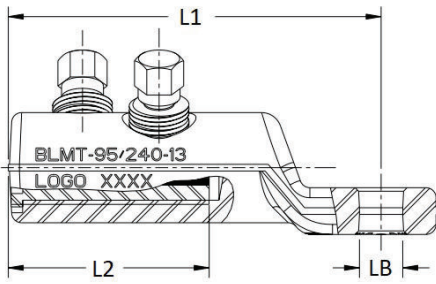
Made of special aluminium alloy, these contact bolts are double shear head bolts with hexagon heads. The bolts are treated with a highly lubricating agent. Contact bolts are irremovable once their heads have been sheared off. The lug body is made of a high-tensile, tin-plated aluminium alloy. The internal surface of the conductor holes is grooved.

These lugs are suitable for outdoor and indoor applications and are available with different palm hole sizes. The bolted fitting featured herein was developed specifically for use in high and medium voltage cable accessories up to 84 kV. They may also be used in the 1 kV range.

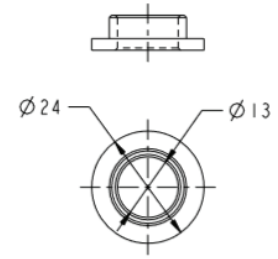
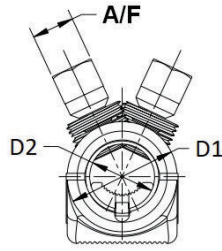
Before using mechanical lugs in cable accessories, verify that they are suitable for the given application and if necessary consult the manufacturer.

Customers can count on consistent, high quality products, driven by TE's proven innovation and backed by our extraordinary customer support.

Mechanical shear bolt terminal lugs BLMT



One-hole Lug



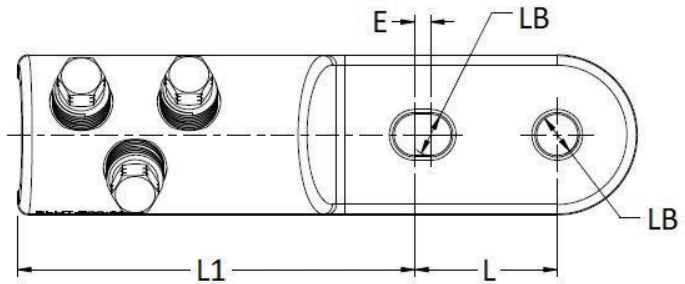
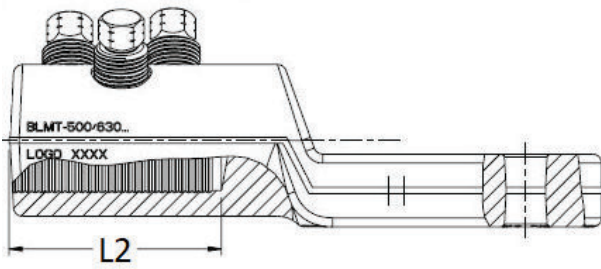
Reducing bush - BLM-REDUCER-13/17

PRODUCT SELECTION INFORMATION - ONE-HOLE LUG

| Description | Conductor cross sectional range and conductor Diameter | Al | | | | Cu | | | | Palm Hole Diameter (mm) LB | Dimensions (mm) | | | | Contact Bolts Quantity | Head Size AF (mm) |
|--------------------------|--|-------------------|----------------|-----------------|--------------|-------------------|----------------|-----------------|-------------------|----------------------------|-----------------|----|----|------|------------------------|-------------------|
| | | Circular Stranded | Circular Solid | Sector Stranded | Sector Solid | Circular Stranded | Circular Solid | Sector Stranded | Flexible Circular | | L1 | L2 | D1 | D2 | | |
| BLMT-25/95-13 | mm ² | 25-95 | 25-95 | 25-70 | - | 16-95 | 10-50 | 25-70 | 25-35 & 70 | 13 | 60 | 30 | 24 | 12.8 | 1 | 10 |
| | (mm) | 5.6-12.5 | 5.5-11 | - | - | 4.6-12.5 | 3.5-8 | - | 6.3-9.2 & 11-12 | | | | | | | |
| BLMT-25/95-17 | mm ² | 25-95 | 25-95 | 25-70 | - | 16-95 | 10-50 | 25-70 | 25-35 & 70 | 17 | 60 | 30 | 24 | 12.8 | 1 | 10 |
| | (mm) | 5.6-12.5 | 5.5-11 | - | - | 4.6-12.5 | 3.5-8 | - | 6.3-9.2 & 11-12 | | | | | | | |
| BLMT-16/70S-95R-13/17* | mm ² | 25-95 | 16-95 | 25-70 | - | 10-95 | - | 25-70 | - | 13 / 17 | 60 | 30 | 24 | 12.8 | 1 | 10 |
| | (mm) | 5.6-12.5 | 4.1-11 | - | - | 3.6-12.5 | - | - | - | | | | | | | |
| BLMT-35/150-13 | mm ² | 35-150 | 35-150 | 50-95 | 50-120 | 35-150 | 35-50 | 50-95 | 50-70 | 13 | 86 | 35 | 28 | 15.8 | 1 | 13 |
| | (mm) | 6.8-15 | 6.5-14 | - | - | 6.6-15 | 6.5-8 | - | 9.2-13.1 | | | | | | | |
| BLMT-35/150-17 | mm ² | 35-150 | 35-150 | 50-95 | 50-120 | 35-150 | 35-50 | 50-95 | 50-70 | 17 | 86 | 35 | 28 | 15.8 | 1 | 13 |
| | (mm) | 6.8-15 | 6.5-14 | - | - | 6.6-15 | 6.5-8 | - | 9.2-13.1 | | | | | | | |
| BLMT-95/240-13 | mm ² | 70-240 | 95-240 | 95-150 | 95-150 | 70-240 | - | 95-150 | 95 & 150-185 | 13 | 112 | 60 | 33 | 20 | 2 | 13 |
| | (mm) | 9.3-19.2 | 10.5-18 | - | - | 9.3-19.2 | - | - | 13-14.3 & 16.5-19 | | | | | | | |
| BLMT-95/240-17 | mm ² | 70-240 | 95-240 | 95-150 | 95-150 | 70-240 | - | 95-150 | 95 & 150-185 | 17 | 112 | 60 | 33 | 20 | 2 | 13 |
| | (mm) | 9.3-19.2 | 10.5-18 | - | - | 9.3-19.2 | - | - | 13-14.3 & 16.5-19 | | | | | | | |
| BLMT-50/185S-240R-13/17* | mm ² | 50-240 | 50-240 | 95-185 | 50-150 | 50-240 | 95-185 | - | - | 13 / 17 | 112 | 60 | 33 | 20 | 2 | 13 |
| | (mm) | 7.7-19.2 | 7.2-17.6 | - | - | 9.3-19.2 | - | - | - | | | | | | | |
| BLMT-120/300-13 | mm ² | 120-300 | 150-300 | 120-185 | 120-240 | 120-300 | - | 120-185 | 240-300 | 13 | 115 | 65 | 37 | 24 | 2 | 13 |
| | (mm) | 12.7-23.1 | 12.9-19.8 | - | - | 12.7-22.6 | - | - | 21-23.5 | | | | | | | |
| BLMT-120/300-17 | mm ² | 120-300 | 150-300 | 120-185 | 120-240 | 120-300 | - | 120-185 | 240-300 | 17 | 115 | 65 | 37 | 24 | 2 | 13 |
| | (mm) | 12.7-23.1 | 12.9-19.8 | - | - | 12.7-22.6 | - | - | 21-23.5 | | | | | | | |
| BLMT-150/400 mk2-13 | mm ² | 150-400 | 150-400 | 150-240 | 185-240 | 150-400 | - | 150-240 | 240 & 300 | 13 | 122 | 80 | 42 | 25.5 | 3 | 13 |
| | (mm) | 13.7-24.6 | 12.9-22.2 | - | - | 13.7-24.6 | - | - | 13-21 & 23.5-25 | | | | | | | |
| BLMT-150/400 mk2-17 | mm ² | 150-400 | 150-400 | 150-240 | 185-240 | 150-400 | - | 150-240 | 240 & 300 | 17 | 122 | 80 | 42 | 25.5 | 3 | 13 |
| | (mm) | 13.7-24.6 | 12.9-22.2 | - | - | 13.7-24.6 | - | - | 13-21 & 23.5-25 | | | | | | | |
| BLMT-150/400 mk2-21 | mm ² | 150-400 | 150-400 | 150-240 | 185-240 | 150-400 | - | 150-240 | 240 & 300 | 21 | 122 | 80 | 42 | 25.5 | 3 | 13 |
| | (mm) | 13.7-24.6 | 12.9-22.2 | - | - | 13.7-24.6 | - | - | 13-21 & 23.5-25 | | | | | | | |
| BLMT-150/400-13/17* | mm ² | 150-400 | 150-400 | 150-240 | 185-240 | 150-400 | - | 150-240 | 300 | 13 / 17 | 122 | 80 | 42 | 25.5 | 3 | 13 |
| | (mm) | 13.7-24.6 | 12.9-22.2 | - | - | 13.7-24.6 | - | - | 23.5-25 | | | | | | | |
| BLMT-500/630 mk2-13 | mm ² | 500-630 | 500-630 | - | - | 500-630 | - | - | 500 | 13 | 125 | 70 | 50 | 33 | 3 | 13 |
| | (mm) | 25.3-32.5 | 24.0-28.6 | - | - | 25.3-32.5 | - | - | 31-32.5 | | | | | | | |
| BLMT-500/630 mk2-17 | mm ² | 500-630 | 500-630 | - | - | 500-630 | - | - | 500 | 17 | 125 | 70 | 50 | 33 | 3 | 13 |
| | (mm) | 25.3-32.5 | 24.0-28.6 | - | - | 25.3-32.5 | - | - | 31-32.5 | | | | | | | |
| BLMT-500/630 mk2-21 | mm ² | 500-630 | 500-630 | - | - | 500-630 | - | - | 500 | 21 | 125 | 70 | 50 | 33 | 3 | 13 |
| | (mm) | 25.3-32.5 | 24.0-28.6 | - | - | 25.3-32.5 | - | - | 31-32.5 | | | | | | | |
| BLMT-630/800RIAL-13/17* | mm ² | 630 | 630-800 | - | - | 630 | - | - | - | 13 / 17 | 125 | 70 | 50 | 33 | 3 | 13 |
| | (mm) | 28.7-32.5 | 27.3-32.1 | - | - | 28.7-32.5 | - | - | - | | | | | | | |
| BLMT-800/1000-17 | mm ² | 800-1000 | 800-1000 | - | - | 800-1000 | - | - | - | 17 | 153 | 85 | 60 | 40 | 4 | 13 |
| | (mm) | 32.5-39.5 | 30.9-36 | - | - | 32.5-39.5 | - | - | - | | | | | | | |
| BLMT-800/1000-21 | mm ² | 800-1000 | 800-1000 | - | - | 800-1000 | - | - | - | 21 | 153 | 85 | 60 | 40 | 4 | 13 |
| | (mm) | 32.5-39.5 | 30.9-36 | - | - | 32.5-39.5 | - | - | - | | | | | | | |

* Supplied with Reducing Bush BLM-REDUCER-13/17 which gives the option to connect the lug with a M12 or M16 bolt

Mechanical shear bolt terminal lugs BLMT



Two-hole lug

PRODUCT SELECTION INFORMATION - TWO-HOLE LUG

| Description | Conductor cross sectional range and conductor Diameter | Al | | | | Cu | | | | Palm Hole Diameter (mm) LB | Dimensions (mm) | | | | | | Contact Bolts Quantity | Head Size AF (mm) |
|--------------------------|--|-------------------|----------------|-----------------|--------------|-------------------|----------------|-----------------|-------------------|----------------------------|-----------------|----|-----|----|----|------|------------------------|-------------------|
| | | Circular Stranded | Circular Solid | Sector Stranded | Sector Solid | Circular Stranded | Circular Solid | Sector Stranded | Flexible Circular | | E | L | L1 | L2 | D1 | D2 | | |
| BLMT-150/400 mk2-2x13 | mm ² | 150-400 | 150-400 | 150-240 | 185-240 | 150-400 | - | 150-240 | 240 & 300 | 2x13 | 5 | 45 | 122 | 80 | 42 | 25.5 | 3 | 13 |
| | (mm) | 13.7-24.6 | 12.9-22.2 | - | - | 13.7-24.6 | - | - | 13-21 & 23.5-25 | | | | | | | | | |
| BLMT-150/400 mk2-2x13-50 | mm ² | 150-400 | 150-400 | 150-240 | 185-240 | 150-400 | - | 150-240 | 240 & 300 | 2x13 | 10 | 50 | 122 | 80 | 42 | 25.5 | 3 | 13 |
| | (mm) | 13.7-24.6 | 12.9-22.2 | - | - | 13.7-24.6 | - | - | 13-21 & 23.5-25 | | | | | | | | | |
| BLMT-150/400 mk2-2x17 | mm ² | 150-400 | 150-400 | 150-240 | 185-240 | 150-400 | - | 150-240 | 240 & 300 | 2x17 | 5 | 45 | 122 | 80 | 42 | 25.5 | 3 | 13 |
| | (mm) | 13.7-24.6 | 12.9-22.2 | - | - | 13.7-24.6 | - | - | 13-21 & 23.5-25 | | | | | | | | | |
| BLMT-500/630 mk2-2x13 | mm ² | 500-630 | 500-630 | - | - | 500-630 | - | - | 500 | 2x13 | 5 | 45 | 125 | 70 | 50 | 33 | 3 | 13 |
| | (mm) | 25.3-32.5 | 24.0-28.6 | - | - | 25.3-32.5 | - | - | 31-32.5 | | | | | | | | | |
| BLMT-500/630 mk2-2x13-50 | mm ² | 500-630 | 500-630 | - | - | 500-630 | - | - | 500 | 2x13 | 10 | 50 | 125 | 70 | 50 | 33 | 3 | 13 |
| | (mm) | 25.3-32.5 | 24.0-28.6 | - | - | 25.3-32.5 | - | - | 31-32.5 | | | | | | | | | |
| BLMT-800/1000-2x13 | mm ² | 800-1000 | 800-1000 | - | - | 800-1000 | - | - | - | 2x13 | 10 | 50 | 153 | 85 | 60 | 40 | 4 | 13 |
| | (mm) | 32.5-39.5 | 30.9-36 | - | - | 32.5-39.5 | - | - | - | | | | | | | | | |

te.com/energy

©2020 TE Connectivity. All Rights Reserved. EPP-2286-09/20-EN

TE Connectivity, TE connectivity (logo), EVERY CONNECTION COUNTS, AMP, AMPACT, Axicom, Bowthorpe EMP, Crompton Instruments, Raychem, SIMEL, UTILUX are trademarks. Other logos, product and Company names mentioned herein may be trademarks of their respective owners. While TE has made every reasonable effort to ensure the accuracy of the information in this brochure, TE does not guarantee that it is error-free, nor does TE make any other representation, warranty or guarantee that the information is accurate, correct, reliable or current. TE reserves the right to make any adjustments to the information contained herein at any time without notice. TE expressly disclaims all implied warranties regarding the information contained herein, including, but not limited to, any implied warranties of merchantability or fitness for a particular purpose. The dimensions in this brochure are for reference purposes only and are subject to change without notice. Specifications are subject to change without notice. Consult TE for the latest dimensions and design specifications.

FOR MORE INFORMATION: TE Technical Support Centers

USA/Canada: +1 800-327-6996
 Brazil: +55 11-2103-6023
 Mexico: +52 55-1106-0800
 South America: +57 1-319-8962
 Benelux: +32 16-508-695
 France: +33 (0) 38-058-3210
 Germany/Switzerland: +49 (0) 89-608-9903
 Italy: +39 335-834-3453
 Middle East/Africa: +971 4-211-7020
 Russia: +7 495-790-790-2-200
 Spain/Portugal: +34 912-681-885
 UK: +44 08708-707-500
 China: +86 400-820-6015