

Heavy Duty Hook Cleat

384 Series



The heavy duty hook cleat is a two piece, single fixing cleat designed to aid single person installation.

Features and Benefits

- Suitable for use with cables diameters 25 to 80mm.
- Manufactured from glass-filled nylon.
- Two-piece, single fixing design.
- Can be double stacked on a single fixing.
- Can be installed in temporary open position to aid single person working.
- All sizes secured with 10mm fixings.
- Operating temperature -25°C to +85°C.
- For normal industrial use Indoor and Outdoor.
- Fits most ladder and tray systems.
- Not designed to secure cables in long vertical routes.
- Tested in accordance with BS EN 50368.

Performance Data

Test Standard	EN 50368:2003
Type	6.1.2 Non-Metallic
Impact Resistance	6.2.4 Heavy -> 6.2.5 V. Heavy
Lateral Load	1.320 -> 1.5 kN
Axial Load	82 -> 109 N
Needle Flame	>120 secs

* Technical Information subject to change without notice

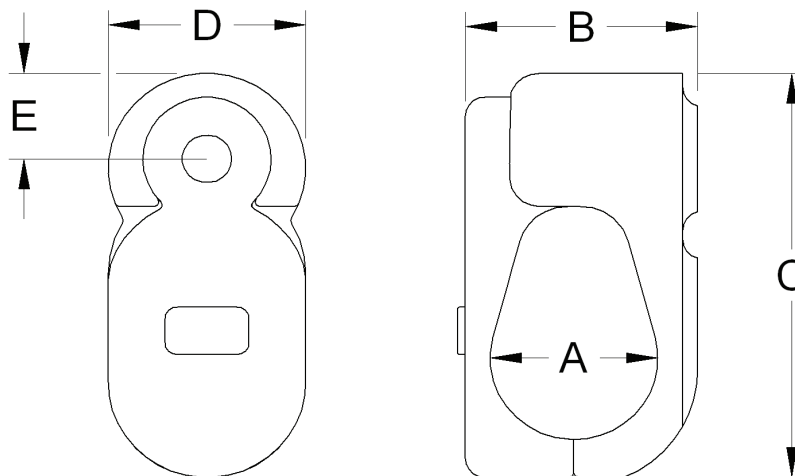
Technical Data

Cable and Cleat Selection			Cleat Details					Weight (g)
Design Number	Cable Diameter		Dimensions (mm)					
	A (mm)		B		C	D	E	
Nylon	Min	Max	Min	Max				
384AA01	25	35	36	46	76	40	18	63
384AA02	34	44	44	54	85	40	18	74
384AA03	43	53	56.5	66.5	96	40	18	105
384AA04	52	62	65.5	75.5	106	40	18	129
384AA05	61	71	78	88	119	44	20	175
384AA06	70	80	87	97	129	44	20	221

* Technical information subject to change without notice

Method of Fixing

In all applications the cleat should be mounted on suitable M10 fixings. There is no need for any channel adaptor when mounting directly on to 'C' section channel.



Prysmian Cables & Systems Limited,
Oak Road, Wrexham Industrial Estate, Wrexham, LL13 9PH, UK

Commercial Enquiries,
Sales Office Tel: 0845 767 8345,
International Sales Office Tel: +44 2380 295481

www.biconcomponents.co.uk