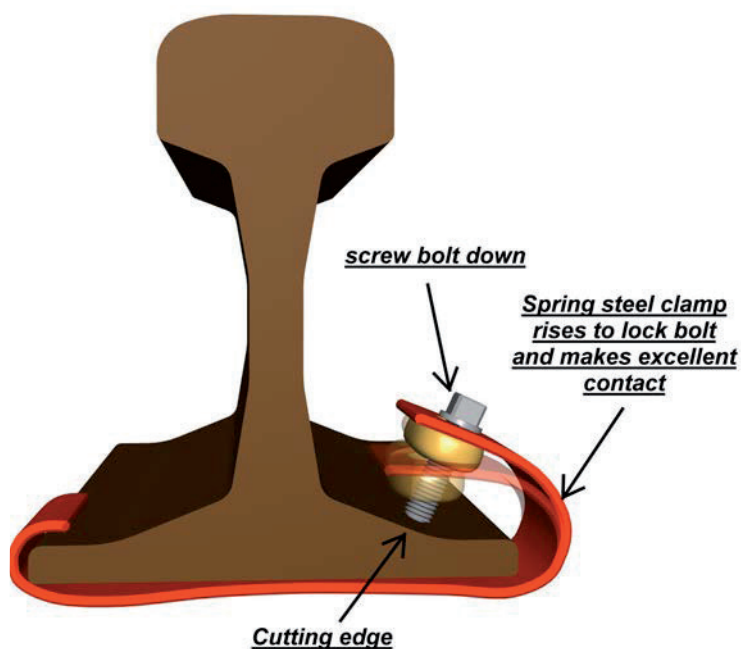


Temporary Cable Connector / Rail Bond

MM-036-05



No need for:
Heavy sledgehammer!
Maintenance!

- Special spring steel of clamp ensure excellent contact.
- No maintenance required! No filing of the contact surfaces etc.
- No cleaning of the rail.
- Excellent performance in cold climates
- Easily fitted with just a spanner.
- Large contact surface on contact screw.
- Can be reused year after year.
- One size fits several rail profiles.



SAFETRACK[®] Maintenance-free temporary rail bond.

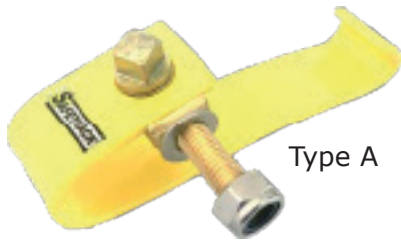
The contact screw force the special spring steel to arises and ensure optimum contact. Only with a spanner!

This type of rail bond is used as a temporary or stationary connection of cables to the rail. It can also be used as a temporary connection between two tracks while rails are being changed.

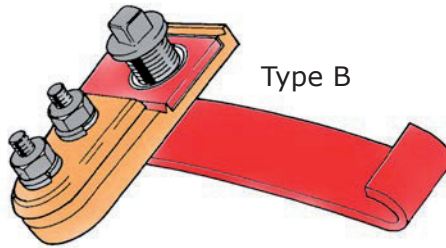
SAFETRACKs unique Temporary Rail Bonds are used also as a Track Circuit Operating Device, T-COD. **UK Network Rail approved.** Over 50 years of excellent performance.

Individual Cable Connector without cable

MM-036-05



Type A



Type B

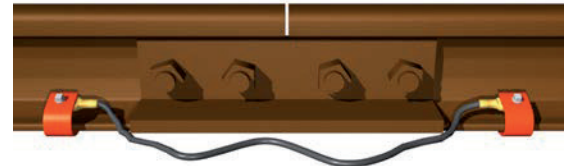


Type C

| SAFE No. | For cable size (mm ²) | Connection to cable | Foot width (mm) | Fits ~rail size | Color | Type | Note |
|----------|-----------------------------------|---------------------|-----------------|-----------------|--------|------|-----------------------------|
| 7019 | up to 50 mm ² | M8 | 120-140 | 50 kg | Red | A | Cable on R side |
| 7078 | up to 50 mm ² | M8 | 139,5-150 | UIC 60 | Yellow | A | Cable on R side |
| 707805 | up to 50 mm ² | M8 | 125-150 | 50-60 kg | Yellow | A | Cable on R side |
| 707807 | up to 50 mm ² | M8 | 125-150 | 50-60 kg | Yellow | A | (Lockable) (use w. 7012) |
| 701919 | up to 50 mm ² | M12 | 120-140 | 50 kg | Red | A | Cable on R side |
| 707806 | up to 50 mm ² | M12 | 125-150 | 50-60 kg | Yellow | A | Cable on R side |
| 707807 | up to 50 mm ² | M8 | 125-150 | 50-60 kg | Yellow | A | (Lockable) (use w. 7012) |
| 7003 | up to 150 mm ² | Stripped bare wire | 120-140 | 50 kg | Red | B | Cable on R side |
| 7004 | up to 150 mm ² | Stripped bare wire | 139,5-150 | UIC 60 | Yellow | B | Cable on R side |
| 70040002 | up to 150 mm ² | M12 | 125-150 | 50-60 kg | Yellow | C | Cable on R side |
| 70040004 | up to 150 mm ² | M12 | 125-150 | 50-60 kg | Yellow | C | Cable on L side |

Rail Bond with cable

| SAFE No. | Sq. Area (mm ²) | Length (mm) | Foot width (mm) | Fits ~rail size | Color |
|---|--|-------------|-----------------|-----------------|-------------|
| 7135 | 25 | 1560 | 100-125 | 35 kg | Yellow |
| 7082 | 25 | 1560 | 120-140 | 50 kg | Red |
| 708686 | 25 | 1560 | 125-150 | 50-60 kg | Yellow |
| 7086 | 25 | 1560 | 139,5-150 | UIC 60 | Yellow |
| 7230 | 25 | 3000 | 125-150 | 50-60 kg | Yellow |
| 7240 | 50 | 1000 | 125-150 | 50-60 kg | Yellow |
| 7242 | 50 | 1200 | 125-150 | 50-60 kg | Yellow |
| 7241 | 50 | 1400 | 125-150 | 50-60 kg | Yellow |
| 7246 | 50 | 1600 | 125-150 | 50-60 kg | Yellow |
| 7245 | 50 | 1700 | 125-150 | 50-60 kg | Yellow |
| 7265* | 50 | 1650 | | Bullhead | TCOD/Red |
| 7239* | 50 | 1650 | 125-150 | 50-60 kg | TCOD/Yellow |
| 7238* | 50 | 1930 | 125-150 | 50-60 kg | TCOD/Yellow |
| 70752 | 50 | 20 000 | 125-150 | 50-60 kg | Yellow |
| 7257 | 95 | 1000 | 125-150 | 50-60 kg | Yellow |
| 7260 | 95 | 1600 | 125-150 | 50-60 kg | Yellow |
| Other lengths available upon request. | | | | | |
| *) TCOD Delivered with locking bolt as standard. Locking key, SAFE 7012 not included. | | | | | |
| 7008 | Bag with velcro strap for temporary bonds and TCOD | | | | |
| 7012 | Wrench/key for TCOD, L=125mm | | | | |



TCOD Key
SAFE 7012



Bag SAFE 7008



For all enquiries please contact your nearest Cable Services branch:

CS - Wrexham Tel: 01978 340450 • Email: sales@cableservices.co.uk
CS - Stone Tel: 01785 825970 • Email: central@cableservices.co.uk
CS - Liverpool Tel: 0151 9339022 • Email: liverpool@cableservices.co.uk

CS - Swindon Tel: 01793 953399 • Email: swindon@cableservices.co.uk
CS - Glasgow Tel: 0141 6212060 • Email: scotland@cableservices.co.uk

For further information please visit: www.cableservices.co.uk or follow us on

