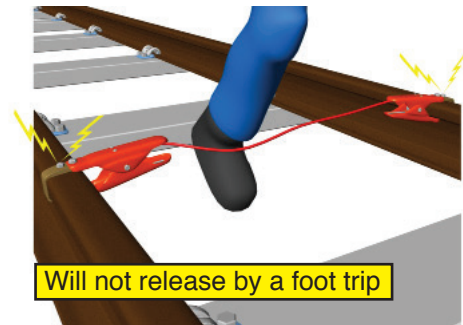
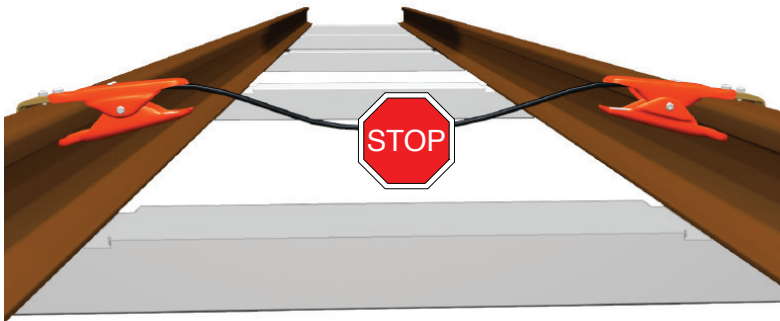


Track Circuit Shunt

MM-043-07

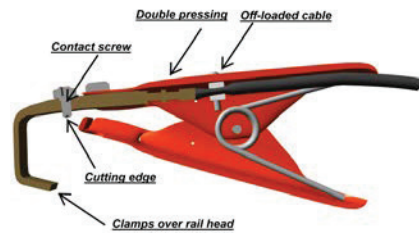


The **SAFETRACK**[®] Track Circuit Shunts or Short Circuit Device is a very safe shunting device used to short out the track circuits to give a "stop" condition. Will not even release by a foot trip, thanks to a well thought-out design. Fits most types of rail profiles. The tongs are easily fitted to the rail and have an excellent contact grip. Orange painted for good visibility.

SAFE no.	BV no.	Length (mm)	Qty/pack.	Note
SAFE 7033	-	2450	2	
SAFE 7034	-	1660	2	
SAFE 7034b	626630	1660	2	Extra insulated
SAFE 7034dk	-	1860	2	Yellow/green cable
SAFE 70351	-	1760	2	
SAFE 7035b	-	1760	2	Extra insulated

Technical specification

Cable lug:	Hot pressed brass
Contact screw:	Stainless steel
Cable:	Multi wire 10mm ² copper PVC insulation, red cable as optional
Tong handles:	Orange painted sheet steel
Test	
Voltage:	24 VDC
Voltage drop:	0,032 V
Current:	10 A
Resistance:	0,0031 Ohm



New!

Accessory:
Bag for the Short circuit device, SAFE 7008

