

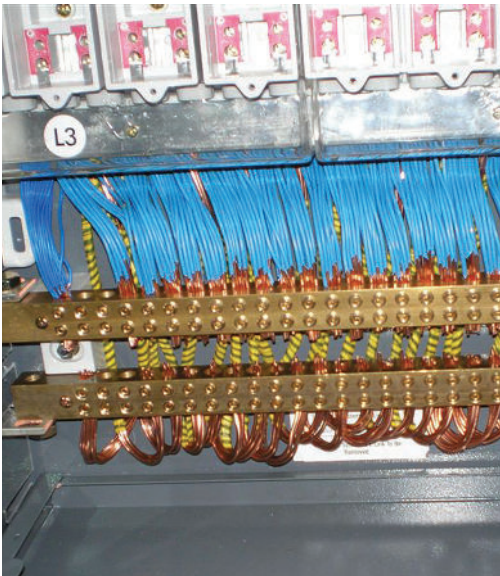
# Multi service distribution boards



# Multi service distribution boards

**Packing many class-leading features designed to facilitate the installer's task, the recently enhanced Lucy Electric vertical multi service distribution boards fully deserve the good reputation that they have created for themselves.**

Meticulous attention to the shrouding of live parts confers a high level of safety to installers whilst the cabinet depth has been kept to a minimum to ensure that the units can be accommodated in confined service compartments away from the general public.



- Staggered outgoing 100A SP fuse service ways provide maximum cable space and full shrouding enables the addition or deletion of services with the board live
- Choice of cable terminations including mechanical shear-off or compression lugs
- Suitable for 3C CNE supplies or 4C SNE with additional kit
- Standard configurations include Left / Right / Top / Bottom incoming supply
- Enclosure manufactured from zinc coated steel with a phosphate resin pre-treatment followed by an oven-cured polyester powder coat finish
- Double doors enabling segregation of incoming DNO compartment and outgoing service ways
- Quick release doors facilitate installation in confined spaces and reduces weight for product manipulation
- Range spans from 12 through to 45 outgoing fused ways
- Incoming BS88 J type fuses with 92mm centres
- 630A busbar rating
- Operator IP2XB protection

## Options

- Second J type fuse way for outgoing supplies greater than 100A (not available for 45 way product)
- Cable extension box to provide extra room for 300mm<sup>2</sup> incoming cables
- SWA glanding kit
- 4C cabling kit
- Temporary insulation shrouds for J type fuse way

## Conformity to Standards

- Conforms to BSEN 60439-1 and Draft ENA specification
- Outgoing fuse ways to BS 7657:2010
- IP rating to BSEN 60529



**2 J MSDB**  
Shrouds and fuse handles removed from one J way to show cable connection points



**1 J MSDB**  
30 way MSDB showing gland plate detail

#### Disclaimer

Lucy Electric has a policy of continuous research and development and accordingly reserves the right to change the design and specification of its products without prior notice.

## Lucy Electric worldwide offices

#### Lucy Electric Ltd.

Howland Road, Thame, Oxfordshire,  
OX9 3UJ, United Kingdom  
Tel: +44 1844 267 267 General  
Tel: +44 1844 267 222 Sales  
Fax: +44 1844 267 223  
Email: salesuk@lucyelectric.com

#### Lucy Middle East FZE.

PO Box 17335, Jebel Ali, Dubai,  
United Arab Emirates  
Tel: +97 148 129 999  
Fax: +97 148 129 900  
Email: salesme@lucyelectric.com

#### Lucy Electric (Thailand) Ltd.

388 Exchange Tower, 37th Flr Unit 3702,  
Sukhumvit Road, Klongtoey Sub district,  
Klongtoey District, Bangkok,  
10110, Thailand  
Tel: +66 (02) 663 4290  
Fax: +66 (02) 663 4293  
Email: salesth@lucyelectric.com

#### Lucy Switchgear Arabia Co. Ltd.

Novotel Business Centre,  
P.O. Box 35340, Dammam 31488,  
Saudi Arabia  
Tel: +966 138 147 910  
Fax: +966 138 147 914  
Email: salessa@lucyelectric.com

#### Lucy Electric (South Africa).

Unit 12 & 13, Block C,  
Honeydew Business Park,  
1503 Citrus Street, Laser Park,  
Honeydew, 2170, South Africa  
Tel: +27 11 025 7490  
Fax: +27 11 794 3277  
Email: salesza@lucyelectric.com

Postal Address:  
P.O. Box 1078, Honeydew, 2040

#### Lucy Asia Pacific Sdn Bhd.

L17-05-06, PJX-HM Shah Tower,  
No16A Jalan Persiaran Barat,  
46050 Petaling Jaya, Selangor, Malaysia  
Tel: +603 74910700  
Fax: +603 79316923  
Email: salesmy@lucyelectric.com

#### Lucy Equipamentos Elétricos Ltda.

Av. das Araucárias 2558  
Thomaz Coelho, CEP 83707-067,  
Araucária Paraná State, Brazil  
Tel: +55 (41) 2106 2801  
Email: salesbrazil@lucyelectric.com

#### Lucy Electric India Private Ltd.

F-10, MIDC, Ambad  
Nasik 422010  
India  
Tel: +91 253 2381603  
Fax: +91 253 2381247  
Email: leindia@lucyelectric.com

*engineering intelligent solutions*  
**www.lucyelectric.com**