

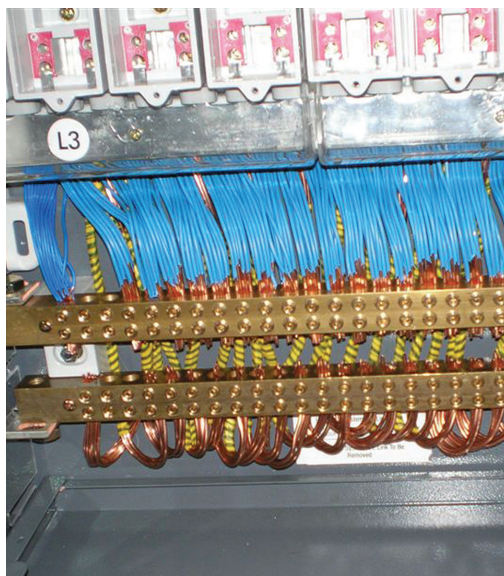
Multi service distribution boards



Multi service distribution boards

Packing many class-leading features designed to facilitate the installer's task, the recently enhanced Lucy Electric vertical multi service distribution boards fully deserve the good reputation that they have created for themselves.

Meticulous attention to the shrouding of live parts confers a high level of safety to installers whilst the cabinet depth has been kept to a minimum to ensure that the units can be accommodated in confined service compartments away from the general public.



- Staggered outgoing 100A SP fuse service ways provide maximum cable space and full shrouding enables the addition or deletion of services with the board live
- Choice of cable terminations including mechanical shear-off or compression lugs
- Suitable for 3C CNE supplies or 4C SNE with additional kit
- Standard configurations include Left / Right / Top / Bottom incoming supply
- Enclosure manufactured from zinc coated steel with a phosphate resin pre-treatment followed by an oven-cured polyester powder coat finish
- Double doors enabling segregation of incoming DNO compartment and outgoing service ways
- Quick release doors facilitate installation in confined spaces and reduces weight for product manipulation
- Range spans from 12 through to 45 outgoing fused ways
- Incoming BS88 J type fuses with 92mm centres
- 630A busbar rating
- Operator IP2XB protection

Options

- Second J type fuse way for outgoing supplies greater than 100A (not available for 45 way product)
- Cable extension box to provide extra room for 300mm² incoming cables
- SWA glanding kit
- 4C cabling kit
- Temporary insulation shrouds for J type fuse way

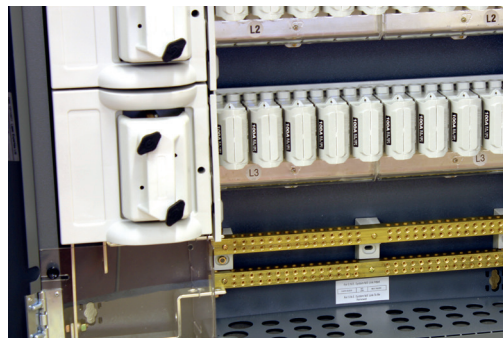
Conformity to Standards

- Conforms to BSEN 60439-1 and Draft ENA specification
- Outgoing fuse ways to BS 7657:2010
- IP rating to BSEN 60529



2 J MSDB

Shrouds and fuse handles removed from one J way to show cable connection points



1 J MSDB

30 way MSDB showing gland plate detail

Disclaimer

Lucy Electric has a policy of continuous research and development and accordingly reserves the right to change the design and specification of its products without prior notice.

Lucy Electric worldwide offices

Lucy Electric Ltd.

Howland Road, Thame, Oxfordshire,
OX9 3UJ, United Kingdom
Tel: +44 1844 267 267 General
Tel: +44 1844 267 222 Sales
Fax: +44 1844 267 223
Email: salesuk@lucyelectric.com

Lucy Middle East FZE.

PO Box 17335, Jebel Ali, Dubai,
United Arab Emirates
Tel: +97 148 129 999
Fax: +97 148 129 900
Email: salesme@lucyelectric.com

Lucy Electric (Thailand) Ltd.

388 Exchange Tower, 37th Flr Unit 3702,
Sukhumvit Road, Klongtoey Sub district,
Klongtoey District, Bangkok,
10110, Thailand
Tel: +66 (02) 663 4290
Fax: +66 (02) 663 4293
Email: salesth@lucyelectric.com

Lucy Switchgear Arabia Co. Ltd.

Novotel Business Centre,
P.O. Box 35340, Dammam 31488,
Saudi Arabia
Tel: +966 138 147 910
Fax: +966 138 147 914
Email: salessa@lucyelectric.com

Lucy Electric (South Africa).

Unit 12 & 13, Block C,
Honeydew Business Park,
1503 Citrus Street, Laser Park,
Honeydew, 2170, South Africa
Tel: +27 11 025 7490
Fax: +27 11 794 3277
Email: salesza@lucyelectric.com

Postal Address:
P.O. Box 1078, Honeydew, 2040

Lucy Asia Pacific Sdn Bhd.

L17-05-06, PJX-HM Shah Tower,
No16A Jalan Persiaran Barat,
46050 Petaling Jaya, Selangor, Malaysia
Tel: +603 74910700
Fax: +603 79316923
Email: salesmy@lucyelectric.com

Lucy Equipamentos Elétricos Ltda.

Av. das Araucárias 2558
Thomaz Coelho, CEP 83707-067,
Araucária Paraná State, Brazil
Tel: +55 (41) 2106 2801
Email: salesbrazil@lucyelectric.com

Lucy Electric India Private Ltd.

F-10, MIDC, Ambad
Nasik 422010
India
Tel: +91 253 2381603
Fax: +91 253 2381247
Email: leindia@lucyelectric.com

engineering intelligent solutions
www.lucyelectric.com