

Sub Mains Distribution Boards

Direct connection 2, 3, 4, 5 and 6 way, 630A rated

Overview and Presentation

Indoor surface mounting sub mains distribution boards which accept a single incoming 3 phase supply up to 630A having 2, 3, 4, 5 or 6 triple pole outgoing BS 88 J type fuse ways with 92mm centres. Configured for direct (single cable) connection of incomer to main busbar.



3 way Sub Mains Distribution Board shown

Features

- Pre galvanized mild steel cabinets finished in a durable polyester powder coating
- Main incomer installed on left hand side for bottom cable entry. Units can also be installed rotated through
- 180 degrees to give top or bottom right hand cable entry
- Standard product configured for 3 core, (4 core SNE kit available. See selection chart below)
- Quick release double doors with separate Earth bonding leads fitted
- Padlock facility on door
- 180 degree door opening
- Four point fixing with stand-offs for uneven surfaces

Note: The equipment described on this data sheet must be installed by suitably qualified personnel according to applicable Local / National Wiring regulations currently in force.

Low Voltage - Cut Outs

Product Characteristics

- Cable capacities
 - Incoming : 1 x 300mm² 4C
 - Outgoing : 1 x 300mm² max
- Cable types
 - Waveform aluminium, 3C, 4C
 - Steel Wire Armoured, 3C, 4C (requires additional gland plate kit)
- Connector type
 - Phase and Neutral , mechanical shear off
 - 95mm² to 300mm² capacity
 - Earth, brass terminal 115mm² capacity
 - Phase stalks have 14mm diameter hole for connector attachment

Enclosure Specification

- Oven-cured epoxy powder coated finish with a minimum thickness of 50 microns
- Standard colour Admiralty grey to BS 381C, shade No 632
- Zinc coated mild steel enclosure

Internal Equipment

- Fully rated Neutral and Earth bars
- 3 x BS 88 J type 92mm centre fuse handles per TP way

Construction

- Enclosure..... Mild steel , nominal 1.6mm thickness
- Busbars..... Electro-tin plated copper
- Earth terminal blocks..... Brass
- Phase/Neutral terminal blocks.....Aluminium
- J type fuse handlesGlass reinforced polybutylene terephthalate (PBT)
- J type fuse bases..... Glass reinforced polyamide 6

Performance Data

- Busbar rating 630A
- Continuous rating600A
- Supply voltage..... 415V a.c.
- Frequency..... 50-60Hz
- Rated insulation voltage..... 690V ac
- Operator protection;
 - All shrouds and fuse handles in place..... IP2XB
 - Operational condition, both doors closed.. IP3X

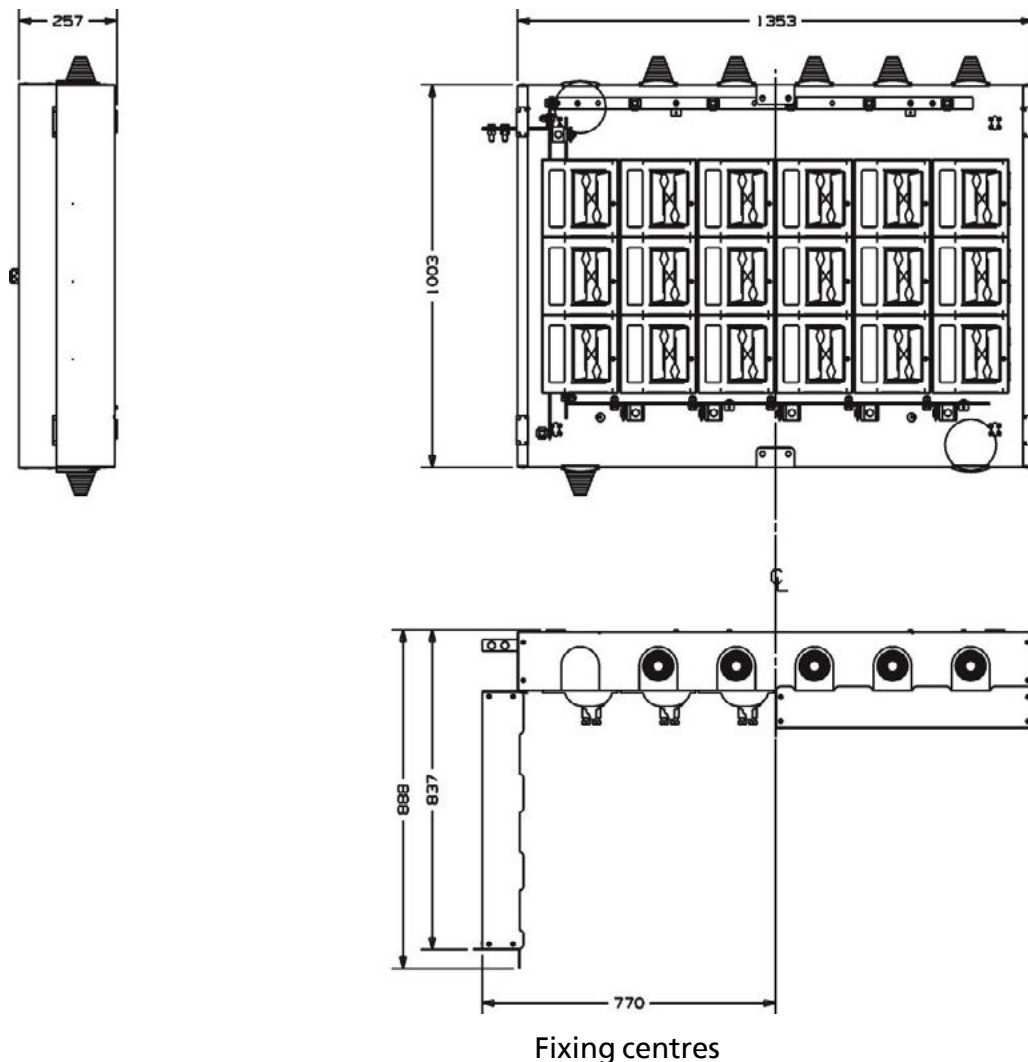
Standards/ Conformity

- Designed to BS EN 60439-1
- IP rating according to BS EN 60529

Weights and Dimensions

- All variants
 - Height.....1003 mm
 - Depth.....257mm
- 6 way
 - Width.....1560mm
 - Weight (excluding fuses)..... N/A
- 5 way
 - Width.....1360mm
 - Weight (excluding fuses).....115kgs
- 4 way
 - Width.....1150mm
 - Weight (excluding fuses)..... N/A
- 3 way
 - Width..... 950mm
 - Weight (excluding fuses).....76.6kgs
- 2 way
 - Width..... 750mm
 - Weight (excluding fuses)..... N/A

General arrangement and dimensions (mm)



- Four core kits;
 - 2 way THM0016924
 - 3 way THM0020469
 - 4 way THM0024139
 - 5 way THM0016979
 - 6 way THM0023980

Disclaimer: Lucy Electric has a policy of continuous research and development thus accordingly reserves the right to change the design and specifications of its products without prior notice or liability.



www.lucyelectric.com