



## EV CHARGING STATION FOUNDATION

Electric vehicle (EV) use in the U.S. is estimated to grow from 3 million (2019) to over 26 million by 2030. To accommodate the sharp increase in demand for charging stations, contractors will need product solutions that are easily installed, durable, cost-effective, and future-proof.

PLP's **EV Charging Station Foundation** is a pre-fabricated, precision-engineered solution for EV charging. Its durable yet lightweight polypropylene foundation requires no specialized machinery; it can be installed by one person in one day. The EV Charging Station Foundation's design adapts to fit a wide range of chargers and charger poles currently on the market, and the aluminum top plate provides a clean finish and easy access point for repairs and future upgrades.

### FEATURES AND BENEFITS

- Make-ready solution that prevents future infrastructure changes
- Easy, one-day installation; no concrete pours or heavy machinery required
- Engineered solution creates a clean, uniform appearance
- Top plate can be modified to fit different charging stations
- Manufactured from durable, weather-resistant polypropylene
- Four ports for versatility and future expansion
- Top plate creates easy access point for charger repairs, replacements, or upgrades
- Lockable wire storage protects components until charging station is installed

## ENGINEERED SOLUTION

- **Foundation** allows the charger to be installed immediately; no waiting for concrete to cure
- **Support Beam** with pre-threaded M12 nuts
- **Top Plate** can be easily drilled and fitted in the field to fit a wide range of charging station models



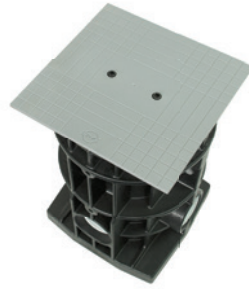
1

FOUNDATION



2

SUPPORT BEAM  
(with pre-threaded  
M12 inserts)



3

TOP PLATE



4

COMPLETED  
INSTALLATION

## FUTURE-PROOF

- Make-ready solution prevents future infrastructure disruptions
- Universal fitting system easily accommodates different charging station models
- Top plate access point makes repairs and replacements easy



©2021 Preformed Line Products EN-SS-1290-1



**For all enquiries please contact your nearest Cable Services branch:**

**CS - Wrexham** Tel: 01978 340450 • E: sales@cableservices.co.uk  
**CS - Stone** Tel: 01785 825970 • E: central@cableservices.co.uk  
**CS - Liverpool** Tel: 0151 9339022 • E: liverpool@cableservices.co.uk

**CS - Swindon** Tel: 01793 953399 • E: swindon@cableservices.co.uk  
**CS - Glasgow** Tel: 0141 6212060 • E: scotland@cableservices.co.uk  
**CS - International** Tel: 01978 340452 • E: export@cableservices.co.uk

For further information please visit: [www.cableservices.co.uk](http://www.cableservices.co.uk) or follow us on   