

PRYSMIAN (BICON) Cable Cleats
CABLES & SYSTEMS

Telcleat (Black Polythene or LSOH) ®

- 10 to 51mm diameter in 8 sizes.
- Overlapping self adjusting ranges.
- Sunlight (UV) and weather resistant.
- One piece, single fixing design.
- Can be double stacked on one fixing.
- Operating temperature -70°C to +70°C.



Low Density Black Polythene - 385AA Type

- Unaffected by corrosive environments oils and many chemicals.

Coloured LSF Compound - 385LSF Type

- Low smoke and fume emission.
- Zero halogen.
- Coloured to distinguish from standard black Telcleat.
- Conforms to BS6853.

Cable Dia (mm)	Polythene Ref No.	LSOH Ref No.
10.5 - 14.5	385AA01	385LSF01
12.2 - 16.7	385AA02	385LSF02
14.6 - 19.8	385AA03	385LSF03
17.7 + 24.0	385AA04	385LSF04
21.7 - 28.5	385AA05	385LSF05
26.2 - 34.2	385AA06	385LSF06
31.9 - 41.6	385AA07	385LSF07
39.3 - 51.1	385AA08	385LSF08

Claw Cleat (Aluminium / Aluminium Epoxy Coated) ®

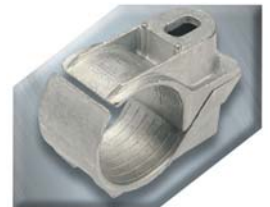
- Suitable for use with cables from 10 to 51mm diameter.
- Available in 9 sizes.
- Can be used for all types of cable routes.
- Operating temperature -60°C to +100°C.
- Two-piece, single fixing design.
- Can be stacked to a maximum of three on one fixing.
(see packing piece 389AC03)
- Also available in cast iron.



Cable Dia (mm)	Aluminium Ref No.	Epoxy Ref No.
10 - 13	370BA01	370BB01
3 - 16	370BA02	370BB02
16 - 19	370BA03	370BB03
19 - 22	370BA04	370BB04
22 - 25	370BA05	370BB05
25 - 32	370BA06	370BB06
32 - 38	370BA07	370BB07
38 - 44	370BA08	370BB08
44 - 51	370BA09	370BB09

Hook Cleat (Aluminium) ®

- Suitable for use with cables from 19mm to 76mm diameter.
- Available in 8 sizes.
- Without cap, supports cable in position during installation.
- Self adjusting range.
- Two-piece, single fixing design.
- Can be double stacked on one fixing.
- Suitable for indoor dry normal industrial use or outdoor unpolluted areas.
- Operating temperature -60°C to +100°C.
- Not designed to secure cables in long vertical routes.



Cable Dia (mm)	Ref No.
19 - 22	371AA03
22 - 25	371AA04
25 - 32	371AA05
32 - 38	371AA06
38 - 44	371AA07
44 - 51	371AA08
51 - 57	371AA09
57 - 64	371AA10
64 - 70	371AA11
70 - 76	371AA12